



Akaun Negara Tahunan

Annual National Accounts

2010

NEGARA BRUNEI DARUSSALAM

Jabatan Perangkaan
Jabatan Perancangan dan Kemajuan
Ekonomi (JPKE)
Jabatan Perdana Menteri
www.depd.gov.bn

*Department of Statistics
Department of Economic Planning and
Development (JPKE)
Prime Minister's Office
www.depd.gov.bn*

Kata Pengantar

Penerbitan ini memaparkan anggaran awal Keluaran Dalam Negeri Kasar (KDNK) bagi tahun 2010. KDNK sering digunakan untuk mengukur perkembangan ekonomi sesebuah negara.

Siri KDNK bagi Negara Brunei Darussalam adalah konsisten dengan Sistem Akaun Negara 1993 (*1993 System of National Accounts*). JPKE akan sentiasa meneliti Sistem Akaun Negara Brunei Darussalam selaras dengan saranan antarabangsa yang terkini dengan matlamat untuk mempertingkatkan kualiti perangkaan akaun negara dan seterusnya agar dapat memberikan gambaran yang lebih tepat mengenai perkembangan dan prestasi ekonomi masakini.

Saya sukacita merakamkan setinggi-tinggi penghargaan dan terima kasih kepada semua pihak, termasuk pemilik dan pengurus syarikat perusahaan/perniagaan di negara ini dan kementerian dan jabatan kerajaan yang telah memberikan kerjasama dalam memberikan maklumat yang diperlukan. JPKE mengalu-alukan sebarang cadangan atau maklumbalas ke arah memperbaiki lagi penerbitan yang akan datang.

Saya yakin perangkaan akaun negara ini akan dapat memberikan maklumat asas yang amat berguna bagi perancang, pembuat dasar dan pengguna lain bagi pelbagai tujuan masing-masing.

Dr. HJH MAY FA'EZAH BINTI HAJI AHMAD ARIFFIN

Pemangku Ketua Pengarah

Jabatan Perancangan dan Kemajuan Ekonomi

Jabatan Perdana Menteri

Negara Brunei Darussalam.

Julai 2011

Foreword

This publication presents the preliminary Gross Domestic Product (GDP) estimates for 2010. GDP is often used to measure the economic performance of a country.

The GDP series for Brunei Darussalam is consistent with the 1993 System of National Accounts. JPKE will continue to review the System of National Accounts for Brunei Darussalam in line with the latest international recommendations, with the view of improving the quality of national accounts statistics and hence to provide a more accurate picture of the current developments and performance in the economy.

I would like to place on record my sincere appreciation and gratitude to all parties, including the proprietors and managers of all business undertakings in the country and government ministries and departments that had given their kind co-operation in providing the required information. JPKE welcomes any suggestions or feedback towards improving future issues.

I trust that this national accounts statistics will provide vital information to planners, policy makers and other users for their various needs.

Dr. HJH MAY FA'EZAH BINTI HAJI AHMAD ARIFFIN

Acting Director General

Department of Economic Planning and Development

Prime Minister's Office

Brunei Darussalam.

July 2011

Kandungan Contents

	<i>Muka surat</i> <u>Page</u>
Kata Pengantar	i
<i>Foreword</i>	ii
Kandungan	iii
<i>Contents</i>	iii
KDNK Tahunan, 2010 : Intisari.....	1
<i>Annual GDP, 2010 : Highlights</i>	8
KDNK Mengikut Pendekatan Pengeluaran	3
<i>GDP by Production Approach</i>	10
KDNK Mengikut Pendekatan Perbelanjaan	5
<i>GDP by Expenditure Approach</i>	12
Jadual Ringkasan & Terperinci	15 - 37
<i>Summary & Detailed Tables</i>	
Nota Teknikal	39
<i>Technical Notes</i>	47
Konsep dan Definisi	39
<i>Concepts and Definitions</i>	47
Sumber Data	43
<i>Data Sources</i>	51
Kaedah	44
<i>Methodology</i>	52

Carta (Figure) :

	Muka Surat
	<u>Page</u>
1.1 Kadar Pertumbuhan KDNK Pada Harga Tetap, 2005 - 2010	1
<i>GDP Growth Rates at Constant Prices, 2005 - 2010</i>	8
1.2 Sumbangan KDNK Mengikut Sektor Utama Pada Harga Semasa, 2005 – 2010.....	4
<i>GDP Share by Production Sectors at Current Prices, 2005 – 2010.....</i>	11
1.3 KDNK Mengikut Komponen Perbelanjaan Pada Harga Semasa, 2005 – 2010	7
<i>GDP by Expenditure Components at Current Prices, 2005 – 2010</i>	14

Jadual (Table) :

1.1 KDNK Pada Harga Semasa dan Tetap, 2008 – 2010	2
<i>GDP at Current and Constant Prices, 2008 – 2010</i>	9
1.2 KDNK Pada Harga Semasa dan Tetap Mengikut Sektor, 2008 – 2010	3
<i>GDP at Current and Constant Prices by Sectors, 2008 – 2010.....</i>	10
1.3 KDNK Pada Harga Semasa dan Tetap Mengikut Jenis Perbelanjaan, 2008 – 2010	6
<i>GDP at Current and Constant Prices by Type of Expenditure, 2008 – 2010</i>	13

Jadual-Jadual Ringkasan dan Terperinci, 2008 - 2010***Summary and Detailed Tables, 2008 - 2010***

A.1 – A.4	Jadual Ringkasan bagi KDNK Pengeluaran <i>Summary Tables for GDP Production</i>	17 - 20
B.1 – B.4	Jadual Ringkasan bagi KDNK Perbelanjaan <i>Summary Tables for GDP Expenditure</i>	21 - 24
C.1	Per Kapita KDNK dan PPP <i>Per Capita GDP and PCE</i>	25
D.1 – D.4	Jadual Terperinci bagi KDNK Pengeluaran <i>Detailed Tables for GDP Production</i>	26 – 29
E.1 – E.4	Jadual Suku Tahunan bagi KDNK Pengeluaran <i>Quarterly Tables for GDP Production</i>	30 – 33
F.1 – F.4	Jadual Suku Tahunan bagi KDNK Perbelanjaan <i>Quarterly Tables for GDP Expenditure</i>	34 – 37

Simbol (Symbols) :

BND	Ringgit Brunei	<i>Brunei Dollar</i>
-	Tidak ada	<i>Nil</i>
0	Nilai kurang dari 1 unit	<i>Less than 1 unit</i>
()	Nilai negatif	<i>Negative value</i>

Singkatan (Abbreviations) :

Sebahagian singkatan digunakan bagi kedua-dua Bahasa Melayu dan Inggeris.
Some abbreviations are used for both the Malay and English languages.

<i>ANA</i>	Akaun Negara Tahunan	<i>ANA</i>	<i>Annual National Accounts</i>
<i>BDSIC</i>	Klasifikasi Standard Industri Negara Brunei Darussalam	<i>BDSIC</i>	<i>Brunei Darussalam Standard Industrial Classification</i>
<i>BDSYB</i>	Buku Perangkaan Tahunan Negara Brunei Darussalam	<i>BDSYB</i>	<i>Brunei Darussalam Statistical Yearbook</i>
<i>BEB</i>	Buletin Ekonomi Brunei	<i>BEB</i>	<i>Brunei Economic Bulletin</i>
<i>BOP</i>	Imbangan Pembayaran	<i>BOP</i>	<i>Balance of Payments</i>
<i>c.i.f.</i>	Kos, insuran, tambang	<i>c.i.f.</i>	<i>Cost, insurance, freight</i>
<i>IHP</i>	Indeks Harga Pengguna	<i>CPI</i>	<i>Consumer Price Index</i>
<i>EC</i>	Banci Ekonomi	<i>EC</i>	<i>Economic Census</i>
<i>ETS</i>	Perangkaan Perdagangan Luar	<i>ETS</i>	<i>External Trade Statistics</i>
<i>f.o.b</i>	Free on board	<i>f.o.b</i>	<i>Free on board</i>
<i>GCE</i>	Perbelanjaan Penggunaan Kerajaan	<i>GCE</i>	<i>Government Consumption Expenditure</i>
<i>KDNK</i>	Keluaran Dalam Negeri Kasar	<i>GDP</i>	<i>Gross Domestic Product</i>
<i>GFCF</i>	Pembentukan Modal Tetap Kasar	<i>GFCF</i>	<i>Gross Fixed Capital Formation</i>
<i>GO</i>	Keluaran Kasar	<i>GO</i>	<i>Gross Output</i>
<i>GVA</i>	Nilai Tambah Kasar	<i>GVA</i>	<i>Gross Value Added</i>
<i>I</i>	Pelaburan (pembentukan modal)	<i>I</i>	<i>Investment (Capital Formation)</i>
<i>IC</i>	Penggunaan Perantaraan	<i>IC</i>	<i>Intermediate Consumption</i>
<i>IPD</i>	Indeks Harga Tersirat	<i>IPD</i>	<i>Implicit Price Deflator</i>
<i>ISIC</i>	Klasifikasi Standard Industri Antarabangsa	<i>ISIC</i>	<i>International Standard Industrial Classification</i>
<i>LNG</i>	Gas cecair asli	<i>LNG</i>	<i>Liquefied natural gas</i>
<i>M</i>	Import	<i>M</i>	<i>Imports</i>
<i>PCE</i>	Perbelanjaan Penggunaan Persendirian	<i>PCE</i>	<i>Personal Consumption Expenditure</i>
<i>SD</i>	Diskrepansi Perangkaan	<i>SD</i>	<i>Statistical Discrepancy</i>
<i>SNA</i>	Sistem Akaun Negara	<i>SNA</i>	<i>System of National Accounts</i>
<i>SUT</i>	Jadual Bekalan dan Penggunaan	<i>SUT</i>	<i>Supply and Use Table</i>
<i>QNA</i>	Akaun Negara Suku Tahun	<i>QNA</i>	<i>Quarterly National Accounts</i>
<i>QSB</i>	Kajian Suku Tahun Perusahaan/Perniagaan	<i>QSB</i>	<i>Quarterly Survey of Businesses</i>
<i>X</i>	Eksport	<i>X</i>	<i>Exports</i>

KDNK Tahunan, 2010 :
Intisari

*Annual GDP, 2010 :
Highlights*

Keluaran Dalam Negeri Kasar, 2010 : Intisari

Pada tahun 2010, ekonomi Negara Brunei Darussalam mencatatkan pertumbuhan positif 2.6 peratus berbanding penurunan 1.8 peratus yang dicatatkan pada tahun 2009. Sektor Minyak & Gas dan Bukan Minyak & Gas masing-masing berkembang sebanyak 2.2 peratus dan 3.0 peratus. D

ari sudut perbelanjaan, perbelanjaan penggunaan akhir mencatatkan pertumbuhan positif sebanyak 2.8 peratus, manakala komponen perbelanjaan yang lain menurun (Carta 1.1 dan Jadual 1.1).

Carta 1.1 : Kadar Pertumbuhan KDNK Pada Harga Tetap, 2005 – 2010



Keluaran Dalam Negeri Kasar (KDNK) pada harga semasa meningkat 8.0 peratus kepada BND 16.9 bilion dari BND 15.6 bilion pada tahun 2009 (**Jadual 1.1**).

KDNK per kapita pada harga semasa juga meningkat 5.9 peratus kepada BND 40.7 ribu dari BND 38.4 ribu pada tahun 2009 (**Jadual 1.1**).

Jadual 1.1: KDNK Pada Harga Semasa Dan Tetap, 2008 – 2010

KDNK	2008	2009	2010
<u>Nilai harga semasa (BND juta)</u>			
KDNK	20,397.9	15,611.4	16,876.3
Sektor Minyak & Gas	14,300.0	9,417.0	10,461.8
Sektor Bukan Minyak & Gas	6,097.9	6,194.3	6,405.5
<u>Aqihan (%) pada harga semasa</u>			
KDNK	100.0	100.0	100.0
Sektor Minyak & Gas	70.1	60.3	62.0
Sektor Bukan Minyak & Gas	29.9	39.7	38.0
<u>Nilai harga tetap (BND juta)</u>			
KDNK	11,753.8	11,546.4	11,846.5
Sektor Minyak & Gas	5,650.5	5,388.5	5,504.6
Sektor Bukan Minyak & Gas	6,103.4	6,157.9	6,341.9
<u>Perubahan (%) pada harga tetap</u>			
KDNK	(1.9)	(1.8)	2.6
Sektor Minyak & Gas	(6.3)	(4.6)	2.2
Sektor Bukan Minyak & Gas	2.4	0.9	3.0
KDNK per kapita (BND), harga semasa	51,251	38,433	40,703

KDNK Mengikuti Pendekatan Pengeluaran

Sektor Pertanian, Perhutanan & Perikanan

Sektor Pertanian, perhutanan & perikanan secara keseluruhannya menurun 5.9 peratus disebabkan penurunan dalam nilai tambah bagi aktiviti perhutanan 57.1 peratus, diikuti oleh ternakan 5.3 peratus dan perikanan 4.3 peratus. Walau bagaimanapun, aktiviti sayur-sayuran, buah-buahan & pertanian meningkat sebanyak 1.3 peratus (**Jadual 1.2**).

Nilai tambah kasar bagi sektor Pertanian, perhutanan dan perikanan dianggarkan bernilai BND 1.3 milion pada harga semasa yang mana menyumbang sebanyak 0.8 peratus kepada KDNK pada tahun 2010 (**Jadual 1.2**).

Jadual 1.2: KDNK Pada Harga Semasa Dan Tetap Mengikut Sektor, 2008 – 2010

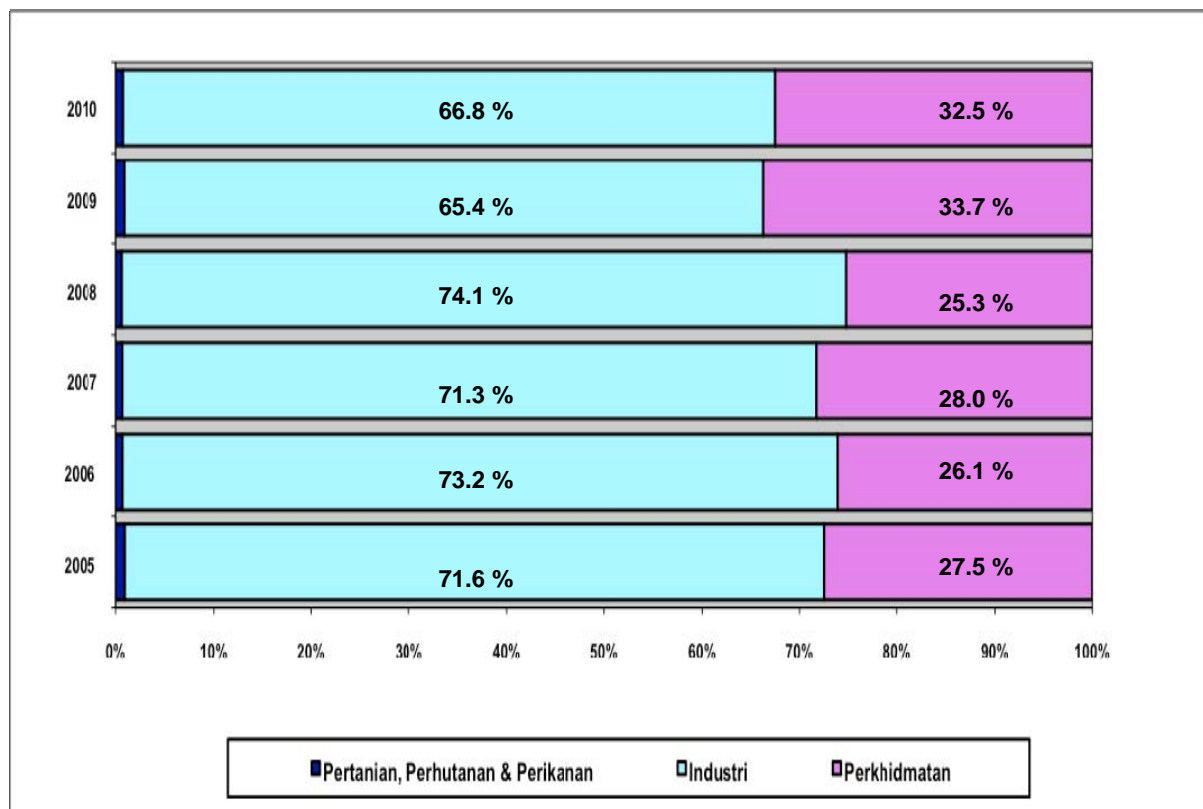
KDNK	2008	2009	2010
<u>Nilai harga semasa (BND juta)</u>			
KDNK	20,397.9	15,611.4	16,867.3
Pertanian, perhutanan & perikanan	129.7	141.9	128.2
Industri	15,117.5	10,210.6	11,262.9
Perkhidmatan	5,150.7	5,258.9	5,476.3
<u>Aqihan (%) pada harga semasa</u>			
KDNK	100.0	100.0	100.0
Pertanian, perhutanan & perikanan	0.6	0.9	0.8
Industri	74.1	65.4	66.8
Perkhidmatan	25.3	33.7	32.5
<u>Nilai harga tetap (BND juta)</u>			
KDNK	11,753.8	11,546.4	11,846.5
Pertanian, perhutanan & perikanan	133.1	140.7	132.5
Industri	6,442.6	6,119.5	6,225.1
Perkhidmatan	5,178.2	5,286.1	5,489.0
<u>Perubahan (%) pada harga tetap</u>			
KDNK	(1.9)	(1.8)	2.6
Pertanian, perhutanan & perikanan	3.8	5.7	(5.9)
Industri	(5.4)	(5.0)	1.7
Perkhidmatan	2.6	2.1	3.8

Sektor Industri

Sektor Industri meningkat sebanyak 1.7 peratus berbanding penurunan 5.0 peratus pada tahun 2009. Aktiviti Elektrik & air mencatatkan pertumbuhan tertinggi sebanyak 4.6 peratus, diikuti oleh Pembinaan 2.4 peratus, Perlombongan 1.7 peratus dan Pembuatan 1.5 peratus.

Nilai tambah kasar bagi sektor Industri pada harga semasa meningkat sebanyak 10.3 peratus dari BND 10.2 bilion pada tahun 2009 kepada BND 11.3 bilion pada tahun 2010. Oleh sebab itu, sumbangannya kepada jumlah KDNK juga meningkat kepada 66.8 peratus dari 65.4 peratus pada tahun 2009 (**Jadual 1.2 dan Carta 1.2**).

Carta 1.2 : Sumbangan KDNK Mengikut Sektor Utama Pada Harga Semasa, 2005 – 2010



Sektor Perkhidmatan

Sektor Perkhidmatan terus meningkat 3.8 peratus selepas kenaikan 2.1 peratus pada tahun 2009. Pengangkutan & perhubungan mencatatkan pertumbuhan tertinggi 6.4 peratus, diikuti oleh Perdagangan 4.5 peratus, Perkhidmatan Kerajaan 3.9 peratus, Perkhidmatan Persendirian 3.5 peratus, Kewangan 2.2 peratus dan Hartanah & pemilikan tempat kediaman 1.7 peratus.

Nilai tambah kasar bagi sektor Perkhidmatan dianggarkan bernilai BND 5.5 bilion pada harga semasa yang mana menyumbang 32.5 peratus kepada KDNK pada tahun 2010. Sektor perkhidmatan menyumbang 33.7 peratus kepada KDNK pada tahun 2009 yang bernilai BND 5.3 bilion. **(Jadual 1.2 dan Carta 1.2).**

KDNK Mengikut Pendekatan Perbelanjaan

Perbelanjaan Penggunaan Akhir

Perbelanjaan Penggunaan Persendirian (PCE) dan Perbelanjaan Penggunaan Kerajaan (GCE) masing-masing mencatatkan kenaikan 2.1 peratus dan 3.5 peratus. Pada harga semasa, PCE dianggarkan berjumlah BND 3.9 bilion, manakala GCE bernilai BND 3.8 bilion. Secara keseluruhan, perbelanjaan penggunaan akhir (PCE dan GCE) menyumbang 45.6 peratus kepada KDNK **(Jadual 1.3 dan Carta 1.3).**

Pembentukan Modal

Pembentukan Modal mencatatkan pertumbuhan negatif sebanyak 3.5 peratus berbanding penurunan 0.3 peratus pada tahun 2009. Ini adalah disebabkan oleh penurunan dalam Pembentukan Modal Tetap Kasar (GFCF) bagi Mesin dan peralatan sebanyak 11.4 peratus. Manakala, Pembinaan terus berkembang sebanyak 1.9 peratus, selepas meningkat 1.3 peratus pada tahun 2009 **(Jadual 1.3 dan Carta 1.3).**

Jadual 1.3 : KDNK Pada Harga Semasa Dan Tetap Mengikut Jenis Perbelanjaan, 2008 – 2010

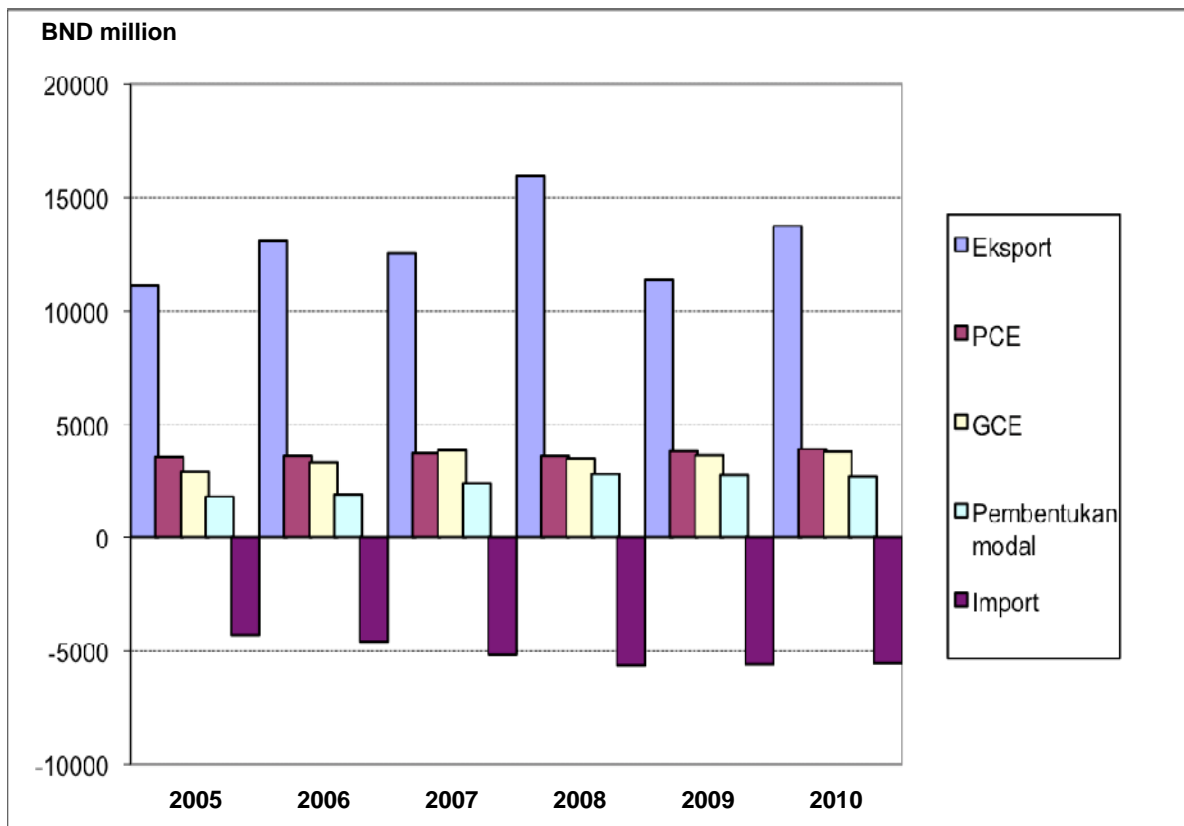
KDNK	2008	2009	2010
<u>Nilai harga semasa (BND juta)</u>			
KDNK	20,397.9	15,611.4	16,867.3
PCE	3,608.0	3,803.0	3,908.6
GCE	3,496.4	3,635.5	3,780.7
Pembentukan modal	2,788.0	2,740.8	2,678.3
Eksport barangan dan perkhidmatan	15,971.4	11,362.7	13,736.6
Kurang: Import barangan dan perkhidmatan	5,632.8	5,587.2	5,544.7
Diskrepansi perangkaan (SD)	166.8	(343.4)	(1,692.1)
<u>Agihan (%) pada harga semasa</u>			
KDNK	100.0	100.0	100.0
PCE	17.9	24.4	23.2
GCE	17.1	23.3	22.4
Pembentukan modal	13.7	17.6	15.9
Eksport barangan dan perkhidmatan	78.3	72.8	81.4
Kurang: Import barangan dan perkhidmatan	27.6	35.8	32.9
Diskrepansi perangkaan (SD)	0.8	(2.2)	(10.0)
<u>Nilai harga tetap (BND juta)</u>			
KDNK	11,753.8	11,546.4	11,846.5
PCE	3,752.7	3,929.9	4,010.8
GCE	3,722.5	3,919.0	4,055.2
Pembentukan modal	2,494.0	2,486.3	2,398.3
Eksport barangan dan perkhidmatan	6,576.6	6,229.9	5,744.1
Kurang: Import barangan dan perkhidmatan	5,559.8	5,515.2	5,500.4
Diskrepansi perangkaan (SD)	767.9	496.5	1,138.5
<u>Perubahan (%) pada harga tetap</u>			
KDNK	(1.9)	(1.8)	2.6
PCE	1.8	4.7	2.1
GCE	(0.8)	5.3	3.5
Pembentukan modal	13.2	(0.3)	(3.5)
Eksport barangan dan perkhidmatan	(6.2)	(5.3)	(7.8)
Kurang: Import barangan dan perkhidmatan	11.0	(0.8)	(0.3)

Eksport dan Import

Eksport barangan dan perkhidmatan menurun 7.8 peratus disebabkan oleh penurunan dalam eksport barangan 10.6 peratus. Walau bagaimanapun, eksport perkhidmatan meningkat 8.0 peratus. Eksport barangan dan perkhidmatan bernilai BND 13.7 bilion pada harga semasa berbanding BND 11.4 bilion pada tahun 2009 (Jadual 1.3 dan Carta 1.3).

Import barangan dan perkhidmatan juga menurun 0.3 peratus disebabkan oleh penurunan dalam import barangan 3.1 peratus. Walau bagaimanapun, import perkhidmatan berkembang 5.9 peratus. Pada harga semasa, nilai import barangan dan perkhidmatan menurun kepada BND 5.5 bilion dari BND 5.6 bilion pada tahun 2009 (Jadual 1.3 dan Carta 1.3).

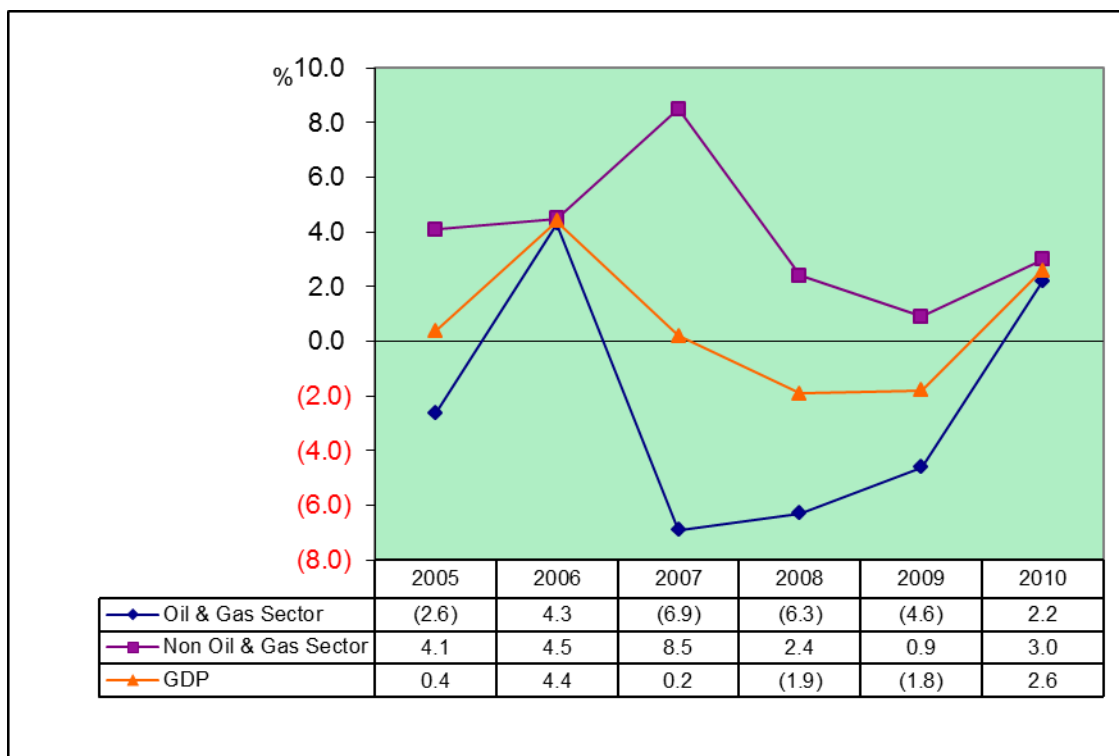
Carta 1.3 : KDNK Mengikut Komponen Perbelanjaan Pada Harga Semasa, 2005 – 2010



Gross Domestic Product, 2010 : Highlights

In 2010, Brunei Darussalam's economy recorded a positive growth of 2.6 per cent compared to a decline of 1.8 per cent recorded in 2009. Both the Oil & Gas and Non Oil & Gas sector grew by 2.2 per cent and 3.0 per cent, respectively. On the expenditure side, final consumption expenditures grew by 2.8 per cent, while the other expenditure components declined (**Chart 1.1 and Table 1.1**).

Chart 1.1 : Growth Rates Of GDP At Constant Prices, 2005 – 2010



Gross Domestic Product (GDP) at current prices increased by 8.0 per cent to BND 16.9 billion from BND 15.6 billion in 2009 (**Table 1.1**).

GDP per capita at current prices also increased by 5.9 per cent to BND 40.7 thousand from BND 38.4 thousand in 2009.

Table 1.1 : GDP At Current And Constant Prices, 2008 – 2010

GDP	2008	2009	2010
<u>Value at current prices (BND million)</u>			
GDP	20,397.9	15,611.4	16,876.3
Oil & gas sector	14,300.0	9,417.0	10,461.8
Non oil & gas sector	6,097.9	6,194.3	6,405.5
<u>Distribution (%) at current prices</u>			
GDP	100.0	100.0	100.0
Oil & gas sector	70.1	60.3	62.0
Non oil & gas sector	29.9	39.7	38.0
<u>Value at constant prices (BND million)</u>			
GDP	11,753.8	11,546.4	11,846.5
Oil & gas sector	5,650.5	5,388.5	5,504.6
Non oil & gas sector	6,103.4	6,157.9	6,341.9
<u>Change (%) at constant prices</u>			
GDP	(1.9)	(1.8)	2.6
Oil & gas sector	(6.3)	(4.6)	2.2
Non oil & gas sector	2.4	0.9	3.0
GDP per capita (BND), current prices	51,251	38,433	40,703

GDP by Production Approach

Agriculture, Forestry & Fishery Sector

The Agriculture, forestry & fishery sector as a whole declined by 5.9 per cent due to the decrease in forestry by 57.1 per cent, followed by livestock & poultry 5.3 per cent and fishery 4.3 per cent. However, vegetables, fruits and other agriculture activities increased by 1.3 per cent (**Table 1.2**).

Gross value added of the Agriculture, forestry & fishery sector was estimated at BND 1.3 million at current prices, contributing 0.8 per cent to GDP in 2010 (**Table 1.2 and Chart 1.2**).

Table 1.2 : GDP At Current And Constant Prices By Sectors, 2008 – 2010

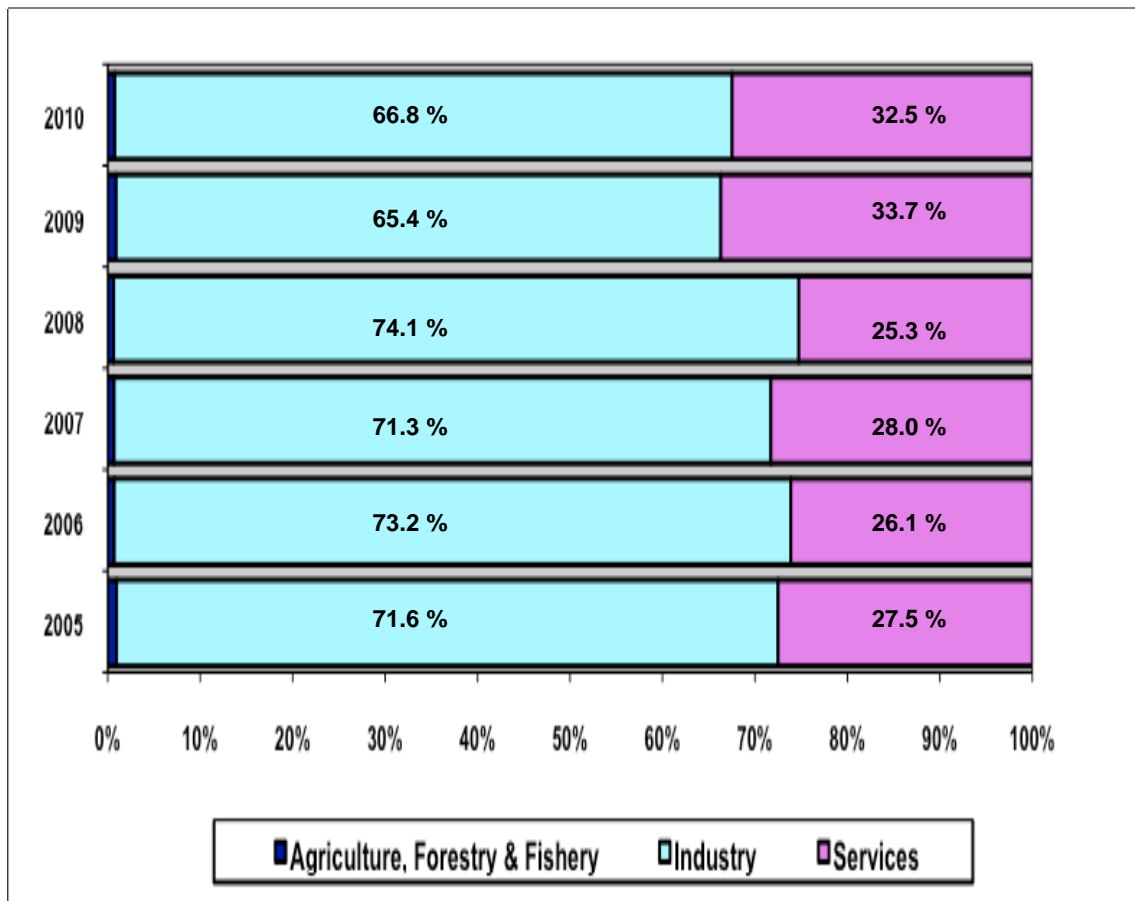
GDP	2008	2009	2010
<u>Value at current prices (BND million)</u>			
GDP	20,397.9	15,611.4	16,867.3
Agriculture, forestry & fishery	129.7	141.9	128.2
Industry	15,117.5	10,210.6	11,262.9
Services	5,150.7	5,258.9	5,476.3
<u>Distribution (%) at current prices</u>			
GDP	100.0	100.0	100.0
Agriculture, forestry & fishery	0.6	0.9	0.8
Industry	74.1	65.4	66.8
Services	25.3	33.7	32.5
<u>Value at constant prices (BND million)</u>			
GDP	11,753.8	11,546.4	11,846.5
Agriculture, forestry & fishery	133.1	140.7	132.5
Industry	6,442.6	6,119.5	6,225.1
Services	5,178.2	5,286.1	5,489.0
<u>Change (%) at constant prices</u>			
GDP	(1.9)	(1.8)	2.6
Agriculture, forestry & fishery	3.8	5.7	(5.9)
Industry	(5.4)	(5.0)	1.7
Services	2.6	2.1	3.8

Industrial Sector

The Industrial sector increased by 1.7 per cent compared to a decline of 5.0 per cent in 2009. Electricity & water recorded the highest growth of 4.6 per cent, followed by Construction 2.4 per cent, Mining 1.7 per cent and Manufacturing 1.5 per cent.

Gross value added of the Industrial sector at current prices increased by 10.3 per cent from BND 10.2 billion in 2009 to BND 11.3 billion in 2010. Consequently, its contribution to total GDP also increased to 66.8 per cent from 65.4 per cent in 2009 (Table 1.2 and Chart 1.2).

Chart 1.2 : GDP Contribution By Production Sectors At Current Prices, 2005 – 2010



Services Sector

The Services sector continued to grow by 3.8 per cent after an increase of 2.1 per cent in 2009. Transport & communication recorded the highest growth of 6.4 per cent, followed by Trade 4.5 per cent, Government services 3.9 per cent, Private services 3.5 per cent, Finance 2.2 per cent and Real estate & ownership of dwellings 1.7 per cent.

Gross value added of the Services sector was estimated at BND 5.5 billion at current prices, contributing 32.5 per cent to GDP in 2010. The Services sector contributed 33.7 per cent to GDP in 2009 which was valued at BND 5.3 billion (**Table 1.2 and Chart 1.2**).

GDP by Expenditure Approach

Final Consumption Expenditure

Both Personal Consumption Expenditure (PCE) and Government Consumption Expenditure (GCE) grew by 2.1 and 3.5 per cent, respectively. At current prices, PCE was estimated at BND 3.9 billion, while GCE amounted to BND 3.8 billion. In total, final consumption expenditures (PCE and GCE) contributed 45.6 per cent to GDP (**Table 1.3 and Chart 1.3**).

Capital Formation

Capital Formation recorded a negative growth of 3.5 per cent compared to a decrease of 0.3 per cent in 2009. This attributed to the decline in Gross Fixed Capital Formation (GFCF) of Machinery and equipment by 11.4 per cent. Meanwhile, Construction continued to grow by 1.9 per cent, after an increase of 1.3 per cent in 2009 (**Table 1.3 and Chart 1.3**).

Table 1.3 : GDP At Current And Constant Prices By Type Of Expenditure, 2008 – 2010

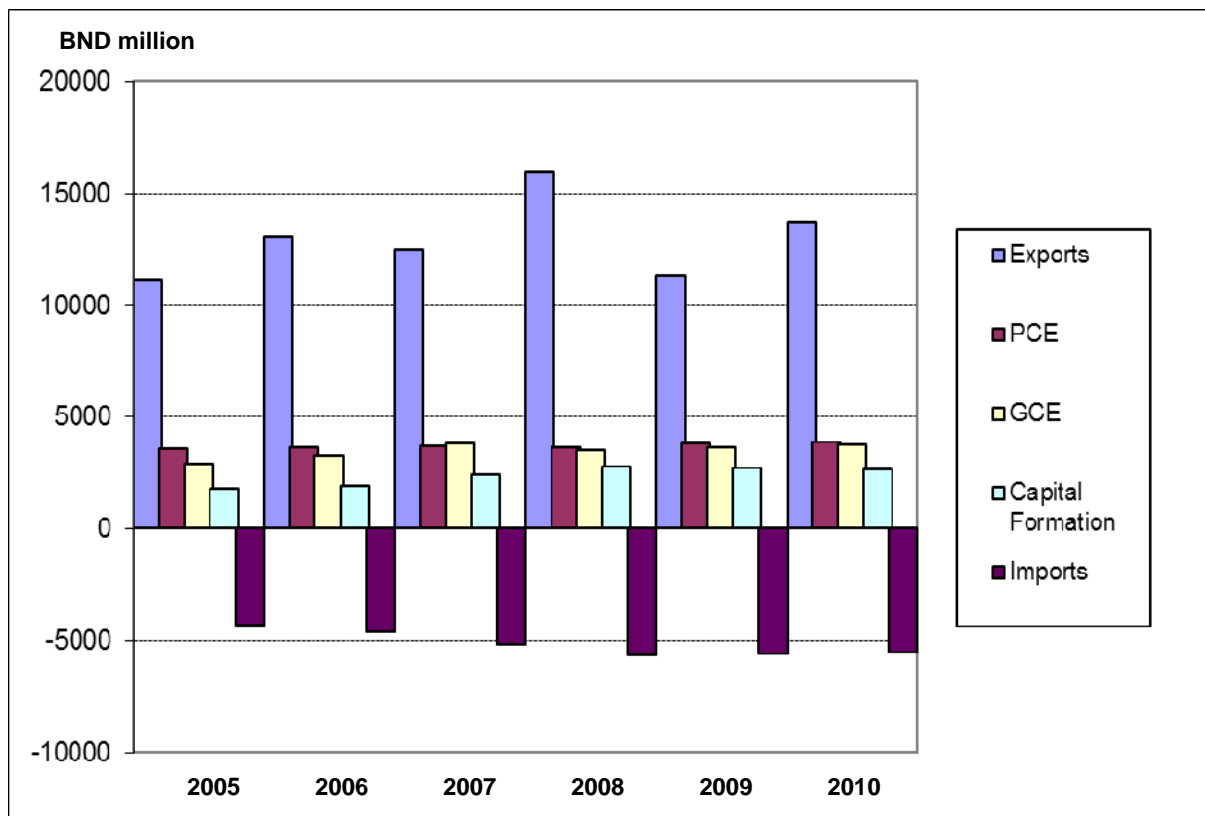
GDP	2008	2009	2010
<u>Value at current prices (BND million)</u>			
GDP	20,397.9	15,611.4	16,867.3
PCE	3,608.0	3,803.0	3,908.6
GCE	3,496.4	3,635.5	3,780.7
Capital Formation	2,788.0	2,740.8	2,678.3
Exports of goods and services	15,971.4	11,362.7	13,736.6
Less : Imports of goods and services	5,632.8	5,587.2	5,544.7
Statistical discrepancy (SD)	166.8	(343.4)	(1,692.1)
<u>Distribution (%) at current prices</u>			
GDP	100.0	100.0	100.0
PCE	17.9	24.4	23.2
GCE	17.1	23.3	22.4
Capital Formation	13.7	17.6	15.9
Exports of goods and services	78.3	72.8	81.4
Less : Imports of goods and services	27.6	35.8	32.9
Statistical discrepancy (SD)	0.8	(2.2)	(10.0)
<u>Value at constant prices (BND million)</u>			
GDP	11,753.8	11,546.4	11,846.5
PCE	3,752.7	3,929.9	4,010.8
GCE	3,722.5	3,919.0	4,055.2
Capital Formation	2,494.0	2,486.3	2,398.3
Exports of goods and services	6,576.6	6,229.9	5,744.1
Less : Imports of goods and services	5,559.8	5,515.2	5,500.4
Statistical discrepancy (SD)	767.9	496.5	1,138.5
<u>Change (%) at constant prices</u>			
GDP	(1.9)	(1.8)	2.6
PCE	1.8	4.7	2.1
GCE	(0.8)	5.3	3.5
Capital Formation	13.2	(0.3)	(3.5)
Exports of goods and services	(6.2)	(5.3)	(7.8)
Less : Imports of goods and services	11.0	(0.8)	(0.3)

Exports and Imports

Exports of goods and services declined by 7.8 per cent due to the decrease in exports of goods by 10.6 per cent. On the other hand, exports of services grew by 8.0 per cent. Exports of goods and services was valued at BND 13.7 billion at current prices compared to BND 11.4 billion in 2009 (Table 1.3 and Chart 1.3).

Imports of goods and services also declined by 0.3 per cent due to the decrease in imports of goods by 3.1 per cent. On the other hand, imports of services grew by 5.9 per cent. At current prices, the value of imports of goods and services decreased to BND 5.5 billion from BND 5.6 billion in 2009 (Table 1.3 and Chart 1.3).

Chart 1.3 : GDP By Expenditure Components At Current Prices, 2005 – 2010



Jadual Ringkasan
& Terperinci

*Summary &
Detailed Tables*

Jadual Ringkasan & Terperinci

Summary and Detailed Tables

2008 - 2010

Jadual Ringkasan (*Summary Tables*)

Jadual A.1 – A.4 - KDNK Mengikut Jenis Aktiviti Ekonomi :
Tables A.1 – A.4 - GDP by Kind of Economic Activity :

- A.1 Nilai pada harga semasa dan harga tetap
Value at current and constant prices
- A.2 Peratus agihan pada harga semasa dan harga tetap
Per cent distribution at current and constant prices
- A.3 Kadar pertumbuhan pada harga semasa dan harga tetap
Growth rates at current and constant prices
- A.4 Pendeflasi harga tersirat dan kadar inflasi
Implicit price deflators and inflation rates

Jadual B.1 – B.4 - KDNK Mengikut Jenis Perbelanjaan :
Tables B.1 – B.4 - GDP by Type of Expenditure :

- B.1 Nilai pada harga semasa dan harga tetap
Value at current and constant prices
- B.2 Peratus agihan pada harga semasa dan harga tetap
Per cent distribution at current and constant prices
- B.3 Kadar pertumbuhan pada harga semasa dan harga tetap
Growth rates at current and constant prices
- B.4 Pendeflasi harga tersirat dan kadar inflasi
Implicit price dflators and inflation rates

Jadual C.1 - KDNK dan PCE Per Kapita :
Tables C.1 - GDP and PCE Per Capita :

- C.1 Nilai dan kadar pertumbuhan pada harga semasa dan harga tetap
Value and growth rate at current and constant prices

Jadual Terperinci (*Detailed Tables*)

Jadual D.1 – D.4 - KDNK Mengikut Pecahan Jenis Aktiviti Ekonomi : Tables D.1 – D.4 - GDP by Breakdown of Kind of Economic Activity :

- D.1 Nilai pada harga semasa dan harga tetap
Value at current and constant prices
- D.2 Peratus agihan pada harga semasa dan harga tetap
Per cent distribution at current and constant prices
- D.3 Kadar pertumbuhan pada harga semasa dan harga tetap
Growth rates at current and constant prices
- D.4 Pendeflasi harga tersirat dan kadar inflasi
Implicit price deflators and inflation rates

Jadual E.1 – E.4 - KDNK Suku Tahunan Mengikut Jenis Aktiviti Ekonomi : Tables E.1 – E.4 - Quarterly GDP by Kind of Economic Activity :

- E.1 Nilai pada harga semasa dan harga tetap
Value at current and constant prices
- E.2 Peratus agihan pada harga semasa dan harga tetap
Per cent distribution at current and constant prices
- E.3 Kadar pertumbuhan pada harga semasa dan harga tetap
Growth rates at current and constant prices
- E.4 Pendeflasi harga tersirat dan kadar inflasi
Implicit price deflators and inflation rates

Jadual F.1 – F.4 - KDNK Suku Tahunan Mengikut Jenis Perbelanjaan : Tables F.1 – F.4 - Quarterly GDP by Type of Expenditure :

- F.1 Nilai pada harga semasa dan harga tetap
Value at current and constant prices
- F.2 Peratus agihan pada harga semasa dan harga tetap
Per cent distribution at current and constant prices
- F.3 Kadar pertumbuhan pada harga semasa dan harga tetap
Growth rates at current and constant prices
- F.4 Pendeflasi harga tersirat dan kadar inflasi
Implicit price deflators and inflation rates

Jumlah di sebahagian jadual mungkin tidak bersamaan disebabkan oleh penggenapan.
Total in some tables may not tally due to rounding.

Jadual A.1 : Keluaran Dalam Negeri Kasar (KDNK) Mengikut Jenis Aktiviti Ekonomi pada Harga Semasa dan Harga Tetap, 2008 - 2010

Table A.1 : Gross Domestic Product (GDP) by Kind of Economic Activity at Current and Constant Prices, 2008 - 2010

Jenis Aktiviti Ekonomi	Nilai (BND juta) Value (BND million)						Kind of Economic Activity
	Pada Harga Semasa (At Current Prices)			Pada Harga Tetap (At Constant Prices)			
	2008	2009 ^p	2010 ^p	2008	2009 ^p	2010 ^p	
PERTANIAN, PERHUTANAN & PERIKANAN	129.7	141.9	128.2	133.1	140.7	132.5	AGRICULTURE, FORESTRY & FISHERY
SEKTOR INDUSTRI	15,117.5	10,210.6	11,262.9	6,442.6	6,119.5	6,225.1	INDUSTRIAL SECTOR
Perombongan	11,672.0	7,389.7	8,571.7	4,150.5	4,008.8	4,075.0	<i>Mining</i>
Pembuatan	2,796.1	2,180.8	2,035.5	1,705.5	1,538.6	1,562.4	<i>Manufacturing</i>
Pembinaan	534.4	518.1	524.1	497.6	477.4	488.7	<i>Construction</i>
Elektrik & Air	115.0	122.0	131.5	89.0	94.6	98.9	<i>Electricity & Water</i>
SEKTOR PERKHIDMATAN	5,150.7	5,258.9	5,476.3	5,178.2	5,286.1	5,489.0	SERVICES SECTOR
Pengangkutan & Perhubungan	533.5	556.0	576.3	527.8	555.8	591.1	<i>Transport & Communication</i>
Perdagangan	558.0	591.2	623.2	561.0	586.4	612.8	<i>Trade</i>
Kewangan	593.0	573.8	583.4	505.7	493.4	504.4	<i>Finance</i>
Hartanah & Pemilikan Tempat Kediaman	433.3	429.9	438.4	426.3	424.9	432.3	<i>Real Estate & Ownership of Dwellings</i>
Perkhidmatan Persendirian	880.5	918.2	942.6	890.6	927.7	960.2	<i>Private Services</i>
Perkhidmatan Kerajaan	2,152.2	2,189.7	2,312.5	2,266.8	2,297.9	2,388.2	<i>Government Services</i>
KELUARAN DALAM NEGERI KASAR (KDNK)	20,397.9	15,611.4	16,867.3	11,753.8	11,546.4	11,846.5	GROSS DOMESTIC PRODUCT (GDP)

p - anggaran awal (*preliminary estimates*)

r - anggaran disemak (*revised estimates*)

Sumber (Source) : JPKE

Jadual A.2 : Peratus Agihan KDNK Mengikut Jenis Aktiviti Ekonomi pada Harga Semasa dan Harga Tetap, 2008 - 2010

Table A.2 : Per cent Distribution of GDP by Kind of Economic Activity at Current and Constant Prices, 2008 - 2010

Jenis Aktiviti Ekonomi	Agihan (%) Contribution (%)						Kind of Economic Activity
	Pada Harga Semasa (At Current Prices)			Pada Harga Tetap (At Constant Prices)			
	2008	2009 ^p	2010 ^p	2008	2009 ^p	2010 ^p	
PERTANIAN, PERHUTANAN & PERIKANAN	0.6	0.9	0.8	1.1	1.2	1.1	AGRICULTURE, FORESTRY & FISHERY
SEKTOR INDUSTRI	74.1	65.4	66.8	54.8	53.0	52.5	INDUSTRIAL SECTOR
Perombongan	57.2	47.3	50.8	35.3	34.7	34.4	<i>Mining</i>
Pembuatan	13.7	14.0	12.1	14.5	13.3	13.2	<i>Manufacturing</i>
Pembinaan	2.6	3.3	3.1	4.2	4.1	4.1	<i>Construction</i>
Elektrik & Air	0.6	0.8	0.8	0.8	0.8	0.8	<i>Electricity & Water</i>
SEKTOR PERKHIDMATAN	25.3	33.7	32.5	44.1	45.8	46.3	SERVICES SECTOR
Pengangkutan & Perhubungan	2.6	3.6	3.4	4.5	4.8	5.0	<i>Transport & Communication</i>
Perdagangan	2.7	3.8	3.7	4.8	5.1	5.2	<i>Trade</i>
Kewangan	2.9	3.7	3.5	4.3	4.3	4.3	<i>Finance</i>
Hartanah & Pemilikan Tempat Kediaman	2.1	2.8	2.6	3.6	3.7	3.6	<i>Real Estate & Ownership of Dwellings</i>
Perkhidmatan Persendirian	4.3	5.9	5.6	7.6	8.0	8.1	<i>Private Services</i>
Perkhidmatan Kerajaan	10.6	14.0	13.7	19.3	19.9	20.2	<i>Government Services</i>
KELUARAN DALAM NEGERI KASAR (KDNK)	100.0	100.0	100.0	100.0	100.0	100.0	GROSS DOMESTIC PRODUCT (GDP)

p - anggaran awal (*preliminary estimates*)

r - anggaran disemak (*revised estimates*)

Sumber (Source) : JPKE

Jadual A.3 : Kadar Pertumbuhan KDNK Mengikut Jenis Aktiviti Ekonomi pada Harga Semasa dan Harga Tetap, 2008 - 2010

Table A.3 : Growth Rates of GDP by Kind of Economic Activity at Current and Constant Prices, 2008 - 2010

Jenis Aktiviti Ekonomi	Kadar Pertumbuhan (%) Growth Rate (%)						Kind of Economic Activity
	Pada Harga Semasa (At Current Prices)			Pada Harga Tetap (At Constant Prices)			
	2007 - 08	2008 - 09 ^P	2009 - 10 ^P	2007 - 08	2008 - 09 ^P	2009 - 10 ^P	
PERTANIAN, PERHUTANAN & PERIKANAN	1.9	9.4	(9.7)	3.8	5.7	(5.9)	AGRICULTURE, FORESTRY & FISHERY
SEKTOR INDUSTRI	14.9	(32.5)	10.3	(5.4)	(5.0)	1.7	INDUSTRIAL SECTOR
Perlombongan	10.1	(36.7)	16.0	(9.3)	(3.4)	1.7	Mining
Pembuatan	45.9	(22.0)	(6.7)	2.8	(9.8)	1.5	Manufacturing
Pembinaan	0.7	(3.0)	1.2	1.8	(4.0)	2.4	Construction
Elektrik & Air	3.2	6.0	7.8	0.9	6.3	4.6	Electricity & Water
SEKTOR PERKHIDMATAN	(0.4)	2.1	4.1	2.6	2.1	3.8	SERVICES SECTOR
Pengangkutan & Perhubungan	4.3	4.2	3.7	6.3	5.3	6.4	Transport & Communication
Perdagangan	1.6	6.0	5.4	0.5	4.5	4.5	Trade
Kewangan	2.4	(3.3)	1.7	2.5	(2.4)	2.2	Finance
Hartanah & Pemilikan Tempat Kediaman	1.4	(0.8)	2.0	2.1	(0.3)	1.7	Real Estate & Ownership of Dwellings
Perkhidmatan Persendirian	2.0	4.3	2.7	2.0	4.2	3.5	Private Services
Perkhidmatan Kerajaan	(3.9)	1.7	5.6	2.7	1.4	3.9	Government Services
KELUARAN DALAM NEGERI KASAR (KDNK)	10.5	(23.5)	8.0	(1.9)	(1.8)	2.6	GROSS DOMESTIC PRODUCT (GDP)

p - anggaran awal (*preliminary estimates*)

r - anggaran disemak (*revised estimates*)

Sumber (Source) : JPKE

Jadual A.4 : Pendeflasi Harga Tersirat dan Kadar Inflasi KDNK Kasar Mengikut Jenis Aktiviti Ekonomi, 2008 - 2010

Table A.4 : Implicit Price Deflators and Inflation Rates of GDP by Kind of Economic Activity, 2008 - 2010

Jenis Aktiviti Ekonomi	Pendeflasi Harga Tersirat (2000 = 100)			Kadar Inflasi (%)			Kind of Economic Activity
	Implicit Price Deflators (2000 = 100)			Inflation Rates (%)			
	2008	2009 ^p	2010 ^p	2007 - 08	2008 - 09 ^p	2009 - 10 ^p	
PERTANIAN, PERHUTANAN & PERIKANAN	97.4	100.8	96.8	3.5	3.5	(4.0)	AGRICULTURE, FORESTRY & FISHERY
SEKTOR INDUSTRI	234.7	166.9	180.9	4.5	(28.9)	8.4	INDUSTRIAL SECTOR
Perlombongan	281.2	184.3	210.3	7.1	(34.5)	14.1	Mining
Pembuatan	163.9	141.7	130.3	2.7	(13.5)	(8.1)	Manufacturing
Pembinaan	107.4	108.5	107.2	(11.4)	1.1	(1.2)	Construction
Elektrik & Air	129.3	128.9	132.9	4.6	(0.3)	3.1	Electricity & Water
SEKTOR PERKHIDMATAN	99.5	99.5	99.8	(0.6)	0.0	0.3	SERVICES SECTOR
Pengangkutan & Perhubungan	101.1	100.0	97.5	(9.7)	(1.0)	(2.5)	Transport & Communication
Perdagangan	99.5	100.8	101.7	0.9	1.4	0.9	Trade
Kewangan	117.3	116.3	115.7	1.0	(0.8)	(0.5)	Finance
Hartanah & Pemilikan Tempat Kediaman	101.7	101.2	101.4	0.5	(0.5)	0.2	Real Estate & Ownership of Dwellings
Perkhidmatan Persendirian	98.9	99.0	98.2	1.8	0.1	(0.8)	Private Services
Perkhidmatan Kerajaan	94.9	95.3	96.8	(0.1)	0.4	1.6	Government Services
KELUARAN DALAM NEGERI KASAR (KDNK)	173.5	135.2	142.4	1.1	(22.1)	5.3	GROSS DOMESTIC PRODUCT (GDP)

p - anggaran awal (*preliminary estimates*)

r - anggaran disemak (*revised estimates*)

Sumber (Source) : JPKE

Jadual B.1 : KDNK Mengikut Jenis Perbelanjaan pada Harga Semasa dan Harga Tetap, 2008 - 2010

Table B.1 : GDP by Type of Expenditure at Current and Constant Prices, 2008 - 2010

Jenis Perbelanjaan	Nilai (BND juta) Value (BND million)						Kind of Economic Activity
	Pada Harga Semasa (At Current Prices)			Pada Harga Tetap (At Constant Prices)			
	2008	2009 ^p	2010 ^p	2008	2009 ^p	2010 ^p	
PERBELANJAAN PENGGUNAAN PERSENDIRIAN	3,608.0	3,803.0	3,908.6	3,752.7	3,939.9	4,010.8	PERSONAL CONSUMPTION EXPENDITURE
PERBELANJAAN PENGGUNAAN KERAJAAN	3,496.4	3,635.5	3,780.7	3,722.5	3,919.0	4,055.2	GOVERNMENT CONSUMPTION EXPENDITURE
PEMBENTUKAN MODAL	2,788.0	2,740.8	2,678.3	2,494.0	2,486.3	2,398.3	CAPITAL FORMATION
Modal Tetap	2,788.9	2,739.6	2,677.6	2,497.3	2,485.9	2,397.6	Fixed Capital
Pembinaan	1,601.0	1,606.1	1,608.8	1,444.6	1,463.2	1,491.5	Construction
Mesin dan Peralatan	1,187.9	1,133.6	1,068.8	1,052.8	1,022.7	906.1	Machinery and Equipment
Perubahan dalam Stok	(0.9)	1.2	0.7	(3.4)	0.4	0.7	Change in Stocks
EKSPORT BARANGAN DAN PERKHIDMATAN	15,971.4	11,362.4	13,736.6	6,576.6	6,229.9	5,744.1	EXPORTS OF GOODS AND SERVICES
Eksport Barangan	14,743.4	10,034.6	12,302.1	5,702.0	5,284.4	4,723.0	Exports of Goods
Eksport Perkhidmatan	1,228.0	1,328.1	1,434.5	874.5	945.4	1,021.2	Exports of Services
tolak : IMPORT BARANGAN DAN PERKHIDMATAN	5,632.8	5,587.2	5,544.7	5,559.8	5,515.2	5,500.4	less : IMPORTS OF GOODS AND SERVICES
Import Barangan	3,647.3	3,504.1	3,349.2	3,913.7	3,772.1	3,654.1	Imports of Goods
Import Perkhidmatan	1,985.5	2,083.1	2,195.5	1,646.2	1,743.1	1,846.3	Imports of Services
Diskrepansi Perangkaan	166.8	(343.4)	(1,692.1)	767.9	496.5	1,138.5	Statistical Discrepancy
KELUARAN DALAM NEGERI KASAR (KDNK)	20,397.9	15,611.4	16,867.3	11,753.8	11,546.4	11,846.5	GROSS DOMESTIC PRODUCT (GDP)

r - anggaran disemak (revised estimates)

p - anggaran awal (preliminary estimates)

Sumber (Source) : JPKE

Jadual B.2 : Peratus Agihan KDNK Mengikut Jenis Perbelanjaan pada Harga Semasa dan Harga Tetap, 2008 - 2010

Table B.2 : Per cent Distribution of GDP by Type of Expenditure at Current and Constant Prices, 2008 - 2010

Jenis Perbelanjaan	Agihan (%) Distribution (%)						Type of Expenditure
	Pada Harga Semasa (At Current Prices)			Pada Harga Tetap (At Constant Prices)			
	2008	2009 ^p	2010 ^p	2007	2009 ^p	2010 ^p	
PERBELANJAAN PENGGUNAAN PERSENDIRIAN	17.7	24.4	23.2	31.9	34.1	33.9	PERSONAL CONSUMPTION EXPENDITURE
PERBELANJAAN PENGGUNAAN KERAJAAN	17.1	23.3	22.4	31.7	33.9	34.2	GOVERNMENT CONSUMPTION EXPENDITURE
PEMBENTUKAN MODAL	13.7	17.6	15.9	21.2	21.5	20.2	CAPITAL FORMATION
Modal Tetap	13.7	17.5	15.9	21.2	21.5	20.2	Fixed Capital
Pembinaan	7.8	10.3	9.5	12.3	12.7	12.6	Construction
Mesin dan Peralatan	5.8	7.3	6.3	9.0	8.9	7.6	Machinery and Equipment
Perubahan dalam Stok	(0.0)	0.0	0.0	(0.0)	0.0	0.0	Change in Stocks
EKSPORT BARANGAN DAN PERKHIDMATAN	78.3	72.8	81.4	56.0	54.0	48.5	EXPORTS OF GOODS AND SERVICES
Eksport Barangan	72.3	64.3	72.9	48.5	45.8	39.9	Exports of Goods
Eksport Perkhidmatan	6.0	8.5	8.5	7.4	8.2	8.6	Exports of Services
tolak : IMPORT BARANGAN DAN PERKHIDMATAN	27.6	35.8	32.9	47.3	47.8	46.4	less : IMPORTS OF GOODS AND SERVICES
Import Barangan	17.9	22.4	19.9	33.3	32.7	30.8	Imports of Goods
Import Perkhidmatan	9.7	13.3	13.0	14.0	15.1	15.6	Imports of Services
Diskrepansi Perangkaan	0.8	(2.2)	(10.0)	6.5	4.3	9.6	Statistical Discrepancy
KELUARAN DALAM NEGERI KASAR (KDNK)	100.0	100.0	100.0	100.0	100.0	100.0	GROSS DOMESTIC PRODUCT (GDP)

r - anggaran disemak (revised estimates)

p - anggaran awal (preliminary estimates)

Sumber (Source) : JPKE

Jadual B.3 : Kadar Pertumbuhan KDNK Mengikut Jenis Perbelanjaan pada Harga Semasa dan Harga Tetap, 2008 - 2010

Table B.3 : Growth Rates of GDP by Type of Expenditure at Current and Constant Prices, 2008 - 2010

Jenis Perbelanjaan	Kadar Pertumbuhan (%) Growth Rates (%)						Type of Expenditure
	Pada Harga Semasa (At Current Prices)			Pada Harga Tetap (At Constant Prices)			
	2007 - 08	2008 - 09 ^p	2009 - 10 ^p	2007 - 08	2008 - 09 ^p	2009 - 10 ^p	
PERBELANJAAN PENGGUNAAN PERSENDIRIAN	(3.1)	5.4	2.8	1.8	4.7	2.1	PERSONAL CONSUMPTION EXPENDITURE
PERBELANJAAN PENGGUNAAN KERAJAAN	(16.3)	4.0	4.0	(0.8)	5.3	3.5	GOVERNMENT CONSUMPTION EXPENDITURE
PEMBENTUKAN MODAL	16.3	(1.7)	(2.3)	13.2	(0.3)	(3.5)	CAPITAL FORMATION
Modal Tetap	16.3	(1.8)	(2.3)	13.3	(0.5)	(3.6)	Fixed Capital
Pembinaan	15.7	0.3	0.2	13.3	1.3	1.9	Construction
Mesin dan Peralatan	17.0	(4.6)	(5.7)	13.2	(2.9)	(11.4)	Machinery and Equipment
EKSPORT BARANGAN DAN PERKHIDMATAN	27.5	(28.9)	20.9	(6.2)	(5.3)	(7.8)	EXPORTS OF GOODS AND SERVICES
Eksport Barangan	30.5	(31.9)	22.6	(7.5)	(7.3)	(10.6)	Exports of Goods
Eksport Perkhidmatan	0.3	8.2	8.0	3.2	8.1	8.0	Exports of Services
tolak : IMPORT BARANGAN DAN PERKHIDMATAN	9.4	(0.8)	(0.8)	11.0	(0.8)	(0.3)	less : IMPORTS OF GOODS AND SERVICES
Import Barangan	15.2	(3.9)	(4.4)	17.3	(3.6)	(3.1)	Imports of Goods
Import Perkhidmatan	0.1	4.9	5.4	(1.7)	5.9	5.9	Imports of Services
KELUARAN DALAM NEGERI KASAR (KDNK)	10.5	(23.5)	8.0	(1.9)	(1.8)	2.6	GROSS DOMESTIC PRODUCT (GDP)

r - anggaran disemak (revised estimates)

p - anggaran awal (preliminary estimates)

Sumber (Source) : JPKE

Jadual B.4 : Pendeflasi Harga Tersirat dan Kadar Inflasi KDNK Mengikut Jenis Perbelanjaan, 2008 - 2010

Table B.4 : *Implicit Price Deflators and Inflation Rates of GDP by Type of Expenditure, 2008 - 2010*

Jenis Perbelanjaan	Pendeflasi Harga Tersirat (2000 = 100)			Kadar Inflasi (%)			Type of Expenditure
	<i>Implicit Price Deflators (2000 = 100)</i>			<i>Inflation Rates (%)</i>			
	2008	2009 ^p	2010 ^p	2007 - 08	2008 - 09 ^p	2009 - 10 ^p	
PERBELANJAAN PENGGUNAAN PERSENDIRIAN	96.1	96.8	97.5	(4.7)	0.7	0.7	PERSONAL CONSUMPTION EXPENDITURE
PERBELANJAAN PENGGUNAAN KERAJAAN	93.9	92.8	93.2	(15.6)	(1.2)	0.5	GOVERNMENT CONSUMPTION EXPENDITURE
PEMBENTUKAN MODAL	111.8	110.2	111.7	2.8	(1.4)	1.3	CAPITAL FORMATION
Modal Tetap	111.7	110.2	111.7	2.7	(1.3)	1.3	Fixed Capital
Pembinaan	110.8	109.8	107.9	2.1	(0.9)	(1.8)	Construction
Mesin dan Peralatan	112.8	110.8	118.0	3.4	(1.8)	6.5	Machinery and Equipment
EKSPORT BARANGAN DAN PERKHIDMATAN	242.9	182.4	239.1	36.0	(24.9)	31.1	EXPORTS OF GOODS AND SERVICES
Eksport Barangan	258.6	189.9	260.5	41.1	(26.6)	37.2	Exports of Goods
Eksport Perkhidmatan	140.4	140.5	140.5	(2.9)	0.1	(0.0)	Exports of Services
tolak : IMPORT BARANGAN DAN PERKHIDMATAN	101.3	101.3	100.8	(1.4)	(0.0)	(0.5)	less : IMPORTS OF GOODS AND SERVICES
Import Barangan	93.2	92.9	91.7	(1.8)	(0.3)	(1.3)	Imports of Goods
Import Perkhidmatan	120.6	119.5	118.9	1.8	(0.9)	(0.5)	Imports of Services
KELUARAN DALAM NEGERI KASAR (KDNK)	173.5	135.2	142.4	12.7	(22.1)	5.3	GROSS DOMESTIC PRODUCT (GDP)

r - anggaran disemak (*revised estimates*)

p - anggaran awal (*preliminary estimates*)

Sumber (Source) : JPKE

Jadual C.1 : Per Kapita KDNK dan Perbelanjaan Penggunaan Persendirian, 2008 - 2010
 Table C.1 : Per Capita GDP and Personal Consumption Expenditure, 2008 - 2010

Per Kapita	Nilai (BND) / Value (BND)			Kadar Pertumbuhan (%) / Growth Rate (%)			Per Capita
	2008	2009 ^P	2010 ^P	2007 - 08	2008 - 09 ^P	2009 - 10 ^P	
<u>Pada harga semasa</u>							<u>At current prices</u>
Keluaran Dalam Negeri Kasar (KDNK)	51,251	38,433	40,703	8.3	(25.0)	5.9	Gross Domestic Product (GDP)
Perbelanjaan Penggunaan Persendirian (PCE)	9,065	9,362	9,432	(0.5)	3.3	0.7	Personal Consumption Expenditure (PCE)
<u>Pada harga tetap</u>							<u>At constant prices</u>
Keluaran Dalam Negeri Kasar (KDNK)	29,532	28,425	28,587	(3.9)	(3.7)	0.6	Gross Domestic Product (GDP)
Perbelanjaan Penggunaan Persendirian (PCE)	9,429	9,675	9,679	(0.3)	2.6	0.0	Personal Consumption Expenditure (PCE)
PENDUDUK (ribu orang)	398.0	406.2	414.4	2.1	2.1	2.0	POPULATION (thousand persons)

r - anggaran disemak (*revised estimates*)

p - anggaran awal (*preliminary estimates*)

Sumber (Source) : JPKE

Jadual D.1 : KDNK Mengikut Pecahan Sektor Minyak & Gas dan Bukan Minyak & Gas pada Harga Semasa dan Harga Tetap, 2009 - 2010

Table D.1 : GDP by Breakdown of Oil & Gas and Non Oil & Gas Sectors at Current and Constant Prices, 2009 - 2010

Jenis Aktiviti Ekonomi	Nilai (BND juta) Value (BND million)						Kind of Economic Activity
	Pada Harga Semasa (At Current Prices)			Pada Harga Tetap (At Constant Prices)			
	2008	2009 ^P	2010 ^P	2008	2009 ^P	2010 ^P	
KELUARAN DALAM NEGERI KASAR (KDNK)	20,397.9	15,611.4	16,867.3	11,753.9	11,546.4	11,846.5	GROSS DOMESTIC PRODUCT (GDP)
Sektor Minyak & Gas	14,300.0	9,417.0	10,461.8	5,650.5	5,388.5	5,504.6	Oil & Gas sector
Penggalian minyak dan gas	11,672.0	7,389.7	8,571.7	4,150.5	4,008.8	4,075.0	Oil and gas mining
Pembuatan gas cecair asli	2,628.0	2,027.3	1,890.1	1,500.0	1,379.7	1,429.6	Manufacture of liquefied natural gas (LNG)
Sektor Bukan Minyak & Gas	6,097.9	6,194.3	6,405.5	6,103.4	6,157.9	6,341.9	Non Oil & Gas sector
Sayur-sayuran, buah-buahan & pertanian lain	29.9	29.3	28.8	35.3	33.9	34.4	Vegetables, fruits & other agriculture
Ternakan	46.2	51.7	45.9	52.5	59.0	55.9	Livestock and poultry
Perhutanan	6.6	6.7	2.9	6.6	6.7	2.9	Forestry
Perikanan	46.9	54.2	50.6	38.6	41.0	39.3	Fishery
Pembuatan pakaian & tekstil	103.2	80.0	57.6	132.1	90.4	43.3	Manufacture of wearing apparel & textile
Lain-lain pembuatan	64.9	73.5	87.8	73.5	68.6	89.6	Other manufacturing
Elektrik dan air	115.0	122.0	131.5	89.0	94.6	98.9	Electricity and water
Pembinaan	534.4	518.1	524.1	497.6	477.4	488.7	Construction
Perdagangan borong dan runcit	558.0	591.2	623.2	561.0	586.4	612.8	Wholesale and retail trade
Pengangkutan air	145.5	161.1	157.2	178.1	200.2	200.5	Water transport
Pengangkutan udara	114.3	123.9	122.6	70.5	72.9	72.5	Air transport
Lain-lain perkhidmatan pengangkutan	108.5	105.6	122.7	109.3	111.9	134.6	Other transport services
Perhubungan	165.2	165.4	173.8	169.9	170.8	183.4	Communication
Kewangan	593.2	573.8	583.4	505.7	493.4	504.4	Finance
Hartanah & pemilikan tempat kediaman	433.3	429.9	438.4	426.3	424.9	432.3	Real estate & ownership of dwellings
Hotel & restoran	57.5	72.2	74.1	42.3	52.9	64.0	Hotels and restaurants
Perkhidmatan kesihatan & pendidikan swasta	100.1	126.8	132.2	98.2	125.0	136.5	Private health and education services
Perkhidmatan perniagaan	619.8	614.9	612.9	632.8	630.7	639.9	Business services
Perkhidmatan rumah tangga bagi isi rumah	51.9	51.9	53.7	49.0	49.1	49.2	Domestic services
Lain-lain perkhidmatan sosial & persendirian	51.2	52.5	69.7	68.3	69.9	70.5	Other private services
Perkhidmatan Kerajaan	2,152.2	2,189.7	2,312.5	2,266.8	2,297.9	2,388.2	Government Services

Jadual D.2 : Peratus Agihan KDNK Mengikut Pecahan Sektor Minyak & Gas dan Bukan Minyak & Gas pada Harga Semasa dan Harga Tetap, 2008 - 2010

Table D.2 : Per cent Distribution of GDP by Breakdown of Oil & Gas and Non Oil & Gas Sectors at Current and Constant Prices, 2008 - 2010

Jenis Aktiviti Ekonomi	Agihan (%) Distribution (%)						Kind of Economic Activity
	Pada Harga Semasa (At Current Prices)			Pada Harga Tetap (At Constant Prices)			
	2008	2009 ^P	2010 ^P	2008	2009 ^P	2010 ^P	
KELUARAN DALAM NEGERI KASAR (KDNK)	100.0	100.0	100.0	100.0	100.0	100.0	GROSS DOMESTIC PRODUCT (GDP)
Sektor Minyak & Gas	70.1	60.3	62.0	48.1	46.7	46.5	Oil & Gas sector
Penggalian minyak dan gas	57.2	47.3	50.8	35.3	34.7	34.4	Oil and gas mining
Pembuatan gas cecair asli	12.9	13.0	11.2	12.8	11.9	12.1	Manufacture of liquefied natural gas (LNG)
Sektor Bukan Minyak & Gas	29.9	39.7	38.0	51.9	53.3	53.5	Non Oil & Gas sector
Sayur-sayuran, buah-buahan & pertanian lain	0.1	0.2	0.2	0.3	0.3	0.3	Vegetables, fruits & other agriculture
Ternakan	0.2	0.3	0.3	0.4	0.5	0.5	Livestock and poultry
Perhutanan	0.0	0.0	0.0	0.1	0.1	0.0	Forestry
Perikanan	0.2	0.3	0.3	0.3	0.4	0.3	Fishery
Pembuatan pakaian & tekstil	0.5	0.5	0.3	1.1	0.8	0.4	Manufacture of wearing apparel & textile
Lain-lain pembuatan	0.3	0.5	0.5	0.6	0.6	0.8	Other manufacturing
Elektrik dan air	0.6	0.8	0.8	0.8	0.8	0.8	Electricity and water
Pembinaan	2.6	3.3	3.1	4.2	4.1	4.1	Construction
Perdagangan borong dan runcit	2.7	3.8	3.7	4.8	5.1	5.2	Wholesale and retail trade
Pengangkutan air	0.7	1.0	0.9	1.5	1.7	1.7	Water transport
Pengangkutan udara	0.6	0.8	0.7	0.6	0.6	0.6	Air transport
Lain-lain perkhidmatan pengangkutan	0.5	0.7	0.7	0.9	1.0	1.1	Other transport services
Perhubungan	0.8	1.1	1.0	1.4	1.5	1.5	Communication
Kewangan	2.9	3.7	3.5	4.3	4.3	4.3	Finance
Hartanah & pemilikan tempat kediaman	2.1	2.8	2.6	3.6	3.7	3.6	Real estate & ownership of dwellings
Hotel & restoran	0.3	0.5	0.4	0.4	0.5	0.5	Hotels and restaurants
Perkhidmatan kesihatan & pendidikan swasta	0.5	0.8	0.8	0.8	1.1	1.2	Private health and education services
Perkhidmatan perniagaan	3.0	3.9	3.6	5.4	5.5	5.4	Business services
Perkhidmatan rumah tangga bagi isi rumah	0.3	0.3	0.3	0.4	0.4	0.4	Domestic services
Lain-lain perkhidmatan sosial & persendirian	0.3	0.3	0.4	0.6	0.6	0.6	Other private services
Perkhidmatan Kerajaan	10.6	14.0	13.7	19.3	19.9	20.2	Government Services

Jadual D.3 : Kadar Pertumbuhan KDNK Mengikut Pecahan Sektor Minyak & Gas dan Bukan Minyak & Gas pada Harga Semasa dan Harga Tetap, 2008 - 2010

Table D.3 : Growth Rates of GDP by Breakdown of Oil & Gas and Non Oil & Gas Sectors at Current and Constant Prices, 2008 - 2010

Jenis Aktiviti Ekonomi	Kadar Pertumbuhan (%) / Growth Rates (%)						Kind of Economic Activity
	Pada Harga Semasa (At Current Prices)			Pada Harga Tetap (At Constant Prices)			
	2007 - 08	2008 - 09 ^P	2009 - 10 ^P	2007 - 08	2008 - 09 ^P	2009 - 10 ^P	
KELUARAN DALAM NEGERI KASAR (KDNK)	10.5	(23.5)	8.0	(1.9)	(1.8)	2.6	GROSS DOMESTIC PRODUCT (GDP)
Sektor Minyak & Gas	15.9	(34.1)	11.1	(6.2)	(4.6)	2.2	Oil & Gas sector
Penggalian minyak dan gas	10.1	(36.7)	16.0	(9.3)	(3.4)	1.7	Oil and gas mining
Pembuatan gas cecair asli	(75.2)	(22.9)	(6.8)	3.7	(8.0)	3.6	Manufacture of liquefied natural gas (LNG)
Sektor Bukan Minyak & Gas	(0.5)	1.6	3.4	2.4	0.9	3.0	Non Oil & Gas sector
Sayur-sayuran, buah-buahan & pertanian lain	21.6	(2.0)	(1.6)	23.4	(3.9)	1.3	Vegetables, fruits & other agriculture
Ternakan	11.9	11.9	(11.3)	3.3	12.4	(5.3)	Livestock and poultry
Perhutanan	33.7	1.5	(57.1)	33.4	1.6	(57.1)	Forestry
Perikanan	(16.9)	15.6	(6.7)	(11.9)	6.2	(4.3)	Fishery
Pembuatan pakaian & tekstil	(11.4)	(22.5)	(28.0)	(3.6)	(31.5)	(52.1)	Manufacture of wearing apparel & textile
Lain-lain pembuatan	(7.9)	13.3	19.5	(2.7)	(6.6)	30.6	Other manufacturing
Elektrik dan air	3.2	6.1	7.8	0.9	6.3	4.6	Electricity and water
Pembinaan	0.7	(3.1)	1.2	1.8	(4.0)	2.4	Construction
Perdagangan borong dan runcit	1.6	5.9	5.4	0.5	4.5	4.5	Wholesale and retail trade
Pengangkutan air	(2.7)	10.7	(2.4)	7.9	12.4	0.1	Water transport
Pengangkutan udara	(2.0)	8.4	(1.1)	(2.2)	3.3	(0.4)	Air transport
Lain-lain perkhidmatan pengangkutan	13.3	(2.7)	16.2	8.8	2.4	20.4	Other transport services
Perhubungan	10.5	0.1	5.1	7.0	0.5	7.4	Communication
Kewangan	2.5	(3.3)	1.7	2.5	(2.4)	2.2	Finance
Hartanah & pemilikan tempat kediaman	1.4	(0.8)	2.0	2.1	(0.3)	1.7	Real estate & ownership of dwellings
Hotel & restoran	(0.3)	25.6	2.7	0.1	25.0	21.1	Hotels and restaurants
Perkhidmatan kesihatan & pendidikan swasta	(6.6)	26.7	4.3	1.1	27.3	9.2	Private health and education services
Perkhidmatan perniagaan	3.4	(0.8)	(0.3)	1.8	(0.3)	1.5	Business services
Perkhidmatan rumah tangga bagi isi rumah	1.2	0.0	3.4	1.3	0.2	0.2	Domestic services
Lain-lain perkhidmatan sosial & persendirian	6.7	2.5	32.7	7.3	2.4	0.8	Other private services
Perkhidmatan Kerajaan	(3.9)	1.7	5.6	2.7	1.4	3.9	Government Services

Jadual D.4 : Pendeflasi Harga Tersirat dan Kadar Inflasi KDNK Mengikut Pecahan Jenis Aktiviti Ekonomi pada Harga Semasa dan Harga Tetap, 2008 - 2010

Table D.4 : *Implicit Price Deflators and Inflation Rates of GDP by Breakdown of Kind of Economic Activity at Current and Constant Prices, 2008 - 2010*

Jenis Aktiviti Ekonomi	Pendeflasi Harga Tersirat (2000 = 100)			Kadar Inflasi (%)			Kind of Economic Activity
	<i>Implicit Price Deflators (2000 = 100)</i>			<i>Inflation Rates (%)</i>			
	2008	2009 ^P	2010 ^P	2007 - 08	2008 - 09 ^P	2009 - 10 ^P	
KELUARAN DALAM NEGERI KASAR (KDNK)	173.5	135.2	142.4	1.1	12.7	5.3	GROSS DOMESTIC PRODUCT (GDP)
Sektor Minyak & Gas	253.1	174.8	190.1	6.0	23.6	8.7	Oil & Gas sector
Penggalian minyak dan gas	281.2	184.3	210.3	7.1	21.4	14.1	Oil and gas mining
Pembuatan gas cecair asli	175.2	146.9	132.2	3.6	46.6	(10.0)	Manufacture of liquefied natural gas (LNG)
Sektor Bukan Minyak & Gas	99.9	100.6	101.0	(1.5)	(2.7)	0.4	Non Oil & Gas sector
Sayur-sayuran, buah-buahan & pertanian lain	84.7	86.4	83.9	14.4	(1.4)	(2.9)	Vegetables, fruits & other agriculture
Ternakan	88.0	87.6	82.1	5.9	8.3	(6.3)	Livestock and poultry
Perhutanan	100.0	100.0	100.0	0.7	(0.7)	0.0	Forestry
Perikanan	121.5	132.0	128.7	3.4	(5.5)	(2.5)	Fishery
Pembuatan pakaian & tekstil	78.1	88.5	133.2	(7.4)	(8.1)	50.5	Manufacture of wearing apparel & textile
Lain-lain pembuatan	88.3	107.2	98.0	(0.6)	(5.4)	(8.5)	Other manufacturing
Elektrik dan air	129.2	128.9	132.9	4.6	2.3	3.1	Electricity and water
Pembinaan	107.4	108.5	107.2	(11.4)	(1.0)	(1.2)	Construction
Perdagangan borong dan runcit	99.5	100.8	101.7	0.9	1.1	0.9	Wholesale and retail trade
Pengangkutan air	81.7	80.4	78.4	(24.0)	(9.8)	(2.5)	Water transport
Pengangkutan udara	162.1	170.1	169.0	0.9	0.3	(0.7)	Air transport
Lain-lain perkhidmatan pengangkutan	99.3	94.4	91.1	(14.7)	4.0	(3.5)	Other transport services
Perhubungan	97.2	96.8	94.8	4.5	3.3	(2.1)	Communication
Kewangan	117.3	116.3	115.7	1.0	(0.0)	(0.6)	Finance
Hartanah & pemilikan tempat kediaman	101.6	101.2	101.4	0.5	(0.7)	0.2	Real estate & ownership of dwellings
Hotel & restoran	135.9	136.5	115.8	(0.9)	(0.6)	(15.2)	Hotels and restaurants
Perkhidmatan kesihatan & pendidikan swasta	101.9	101.4	96.8	23.8	(7.7)	(4.5)	Private health and education services
Perkhidmatan perniagaan	97.9	97.5	95.8	(0.3)	1.6	(1.8)	Business services
Perkhidmatan rumah tangga bagi isi rumah	160.0	105.8	109.1	0.3	51.0	3.1	Domestic services
Lain-lain perkhidmatan sosial & persendirian	75.0	75.0	98.8	(1.2)	(0.7)	31.8	Other private services
Perkhidmatan Kerajaan	94.9	95.3	96.8	(0.1)	(6.5)	1.6	Government Services

Jadual E.1 : KDNK Mengikut Jenis Aktiviti Ekonomi Pada Harga Semasa dan Tetap, Suku Tahunan 2009 dan 2010

Table E.1 : GDP by Kind of Economic Activity at Current and Constant Prices, Quarterly 2009 and 2010

Jenis Aktiviti Ekonomi Pada Harga Semasa	Nilai (BND juta) / Value (BND million)										Kind of Economic Activity At Current Prices
	2009	I	II	III	IV	2010	I	II	III	IV	
PERTANIAN, PERHUTANAN & PERIKANAN	141.9	34.5	32.4	34.2	40.8	128.2	34.0	31.3	32.4	30.5	AGRICULTURE, FORESTRY & FISHERY
SEKTOR INDUSTRI	10,210.6	2,256.8	1,946.2	2,609.6	3,398.1	11,262.9	2,834.5	2,525.9	2,761.1	3,141.4	INDUSTRIAL SECTOR
Perombongan	7,389.7	1,418.5	1,375.7	1,965.7	2,629.8	8,571.7	2,249.8	1,863.4	2,074.4	2,384.1	<i>Mining</i>
Pembuatan	2,180.8	688.0	433.4	462.5	596.9	2,035.5	432.7	517.7	502.8	582.3	<i>Manufacturing</i>
Pembinaan	518.1	120.9	108.6	149.4	139.2	524.1	119.7	112.4	150.5	141.5	<i>Construction</i>
Elektrik & Air	122.0	29.3	28.6	32.0	32.1	131.5	32.2	32.4	33.5	33.4	<i>Electricity & Water</i>
SEKTOR PERKHIDMATAN	5,258.9	1,272.4	1,276.0	1,252.0	1,458.5	5,476.3	1,325.9	1,317.3	1,303.4	1,529.7	SERVICES SECTOR
Pengangkutan & Perhubungan	556.0	144.7	118.4	172.1	120.8	576.3	148.1	126.4	176.2	125.5	<i>Transport & Communication</i>
Perdagangan	591.2	158.5	145.4	149.6	137.7	623.2	169.4	152.9	156.8	144.1	<i>Trade</i>
Kewangan	573.8	119.5	129.1	137.7	187.5	583.4	122.0	129.8	139.4	192.2	<i>Finance</i>
Hartanah & Pemilikan Tempat Kediaman	429.9	107.5	106.4	108.3	107.8	438.4	108.8	108.1	110.6	110.9	<i>Real Estate & Ownership of Dwellings</i>
Perkhidmatan Persendirian	918.2	229.5	277.8	171.3	239.6	942.6	234.0	278.8	178.1	251.7	<i>Private Services</i>
Perkhidmatan Kerajaan	2,189.7	512.7	498.9	513.0	665.1	2,312.5	543.6	521.3	542.3	705.3	<i>Government Services</i>
KELUARAN DALAM NEGERI KASAR (KDNK)	15,611.4	3,563.7	3,254.6	3,895.7	4,897.4	16,867.3	4,194.4	3,874.6	4,096.9	4,701.5	GROSS DOMESTIC PRODUCT (GDP)
Pada Harga Tetap	2009	I	II	III	IV	2010	I	II	III	IV	At Constant Prices
PERTANIAN, PERHUTANAN & PERIKANAN	140.7	34.7	31.4	36.0	38.6	132.5	34.4	32.6	33.8	31.7	AGRICULTURE, FORESTRY & FISHERY
SEKTOR INDUSTRI	6,119.5	1,559.8	1,301.9	1,506.6	1,751.2	6,225.1	1,624.2	1,431.0	1,542.3	1,627.6	INDUSTRIAL SECTOR
Perombongan	4,008.8	1,000.2	830.3	982.8	1,195.5	4,075.0	1,091.9	907.6	1,005.0	1,070.5	<i>Mining</i>
Pembuatan	1,538.6	424.0	346.4	362.0	406.2	1,562.4	397.7	390.9	370.9	402.9	<i>Manufacturing</i>
Pembinaan	477.4	113.5	101.0	137.7	125.3	488.7	110.3	107.5	141.5	129.5	<i>Construction</i>
Elektrik & Air	94.6	22.2	24.1	24.1	24.2	98.9	24.3	25.0	24.9	24.7	<i>Electricity & Water</i>
SEKTOR PERKHIDMATAN	5,286.1	1,234.2	1,238.8	1,283.4	1,529.8	5,489.0	1,281.2	1,277.3	1,333.6	1,596.9	SERVICES SECTOR
Pengangkutan & Perhubungan	555.8	126.5	120.6	177.7	131.0	591.1	134.9	128.7	188.7	138.7	<i>Transport & Communication</i>
Perdagangan	586.4	153.4	145.0	149.1	138.9	612.8	158.7	152.0	155.6	146.5	<i>Trade</i>
Kewangan	493.4	109.4	104.4	110.0	169.6	504.4	112.0	105.1	112.1	175.1	<i>Finance</i>
Hartanah & Pemilikan Tempat Kediaman	424.9	106.2	105.1	106.8	106.8	432.3	107.5	106.8	108.8	109.1	<i>Real Estate & Ownership of Dwellings</i>
Perkhidmatan Persendirian	927.7	240.3	279.3	177.1	231.0	960.2	243.5	282.6	181.6	252.6	<i>Private Services</i>
Perkhidmatan Kerajaan	2,297.9	498.5	484.3	562.7	752.4	2,388.2	524.7	502.0	586.7	774.9	<i>Government Services</i>
KELUARAN DALAM NEGERI KASAR (KDNK)	11,546.4	2,828.8	2,572.1	2,825.9	3,319.6	11,846.5	2,939.8	2,740.8	2,909.6	3,256.2	GROSS DOMESTIC PRODUCT (GDP)

Jadual E.2 : Peratus Agihan KDNK Mengikut Jenis Aktiviti Ekonomi Pada Harga Semasa dan Tetap, Suku Tahunan 2009 dan 2010

Table E.2 : Per cent Distribution of GDP by Kind of Economic Activity at Current and Constant Prices, Quarterly 2009 and 2010

Jenis Aktiviti Ekonomi Pada Harga Semasa	Agihan (%) / Distribution (%)										Kind of Economic Activity At Current Prices
	2009	I	II	III	IV	2010	I	II	III	IV	
PERTANIAN, PERHUTANAN & PERIKANAN	0.9	1.0	1.0	0.9	0.8	0.8	0.8	0.8	0.8	0.6	AGRICULTURE, FORESTRY & FISHERY
SEKTOR INDUSTRI	65.4	63.3	59.8	67.0	69.4	66.8	67.6	65.2	67.4	66.8	INDUSTRIAL SECTOR
Perlombongan	47.3	39.8	42.3	50.5	53.7	50.8	53.6	48.1	50.6	50.7	<i>Mining</i>
Pembuatan	14.0	19.3	13.3	11.9	12.2	12.1	10.3	13.4	12.3	12.4	<i>Manufacturing</i>
Pembinaan	3.3	3.4	3.3	3.8	2.8	3.1	2.9	2.9	3.7	3.0	<i>Construction</i>
Elektrik & Air	0.8	0.8	0.9	0.8	0.7	0.8	0.8	0.8	0.8	0.7	<i>Electricity & Water</i>
SEKTOR PERKHIDMATAN	33.7	35.7	39.2	32.1	29.8	32.5	31.6	34.0	31.8	32.5	SERVICES SECTOR
Pengangkutan & Perhubungan	3.6	4.1	3.6	4.4	2.5	3.4	3.5	3.3	4.3	2.7	<i>Transport & Communication</i>
Perdagangan	3.8	4.4	4.5	3.8	2.8	3.7	4.0	3.9	3.8	3.1	<i>Trade</i>
Kewangan	3.7	3.4	4.0	3.5	3.8	3.5	2.9	3.4	3.4	4.1	<i>Finance</i>
Hartanah & Pemilikan Tempat Kediaman	2.8	3.0	3.3	2.8	2.2	2.6	2.6	2.8	2.7	2.4	<i>Real Estate & Ownership of Dwellings</i>
Perkhidmatan Persendirian	5.9	6.4	8.5	4.4	4.9	5.6	5.6	7.2	4.3	5.4	<i>Private Services</i>
Perkhidmatan Kerajaan	14.0	14.4	15.3	13.2	13.6	13.7	13.0	13.5	13.2	15.0	<i>Government Services</i>
KELUARAN DALAM NEGERI KASAR (KDNK)	100.0	100.0	100.0	100.0	100.0	100.0	100.0	100.0	100.0	100.0	GROSS DOMESTIC PRODUCT (GDP)
Pada Harga Tetap	2009	I	II	III	IV	2010	I	II	III	IV	At Constant Prices
PERTANIAN, PERHUTANAN & PERIKANAN	1.2	1.2	1.2	1.3	1.2	1.1	1.2	1.2	1.2	1.0	AGRICULTURE, FORESTRY & FISHERY
SEKTOR INDUSTRI	53.0	55.1	50.6	53.3	52.8	52.5	55.2	52.2	53.0	50.0	INDUSTRIAL SECTOR
Perlombongan	34.7	35.4	32.3	34.8	36.0	34.4	37.1	33.1	34.5	32.9	<i>Mining</i>
Pembuatan	13.3	15.0	13.5	12.8	12.2	13.2	13.5	14.3	12.7	12.4	<i>Manufacturing</i>
Pembinaan	4.1	4.0	3.9	4.9	3.8	4.1	3.8	3.9	4.9	4.0	<i>Construction</i>
Elektrik & Air	0.8	0.8	0.9	0.9	0.7	0.8	0.8	0.9	0.9	0.8	<i>Electricity & Water</i>
SEKTOR PERKHIDMATAN	45.8	43.6	48.2	45.4	46.1	46.3	43.6	46.6	45.8	49.0	SERVICES SECTOR
Pengangkutan & Perhubungan	4.8	4.5	4.7	6.3	3.9	5.0	4.6	4.7	6.5	4.3	<i>Transport & Communication</i>
Perdagangan	5.1	5.4	5.6	5.3	4.2	5.2	5.4	5.5	5.3	4.5	<i>Trade</i>
Kewangan	4.3	3.9	4.1	3.9	5.1	4.3	3.8	3.8	3.9	5.4	<i>Finance</i>
Hartanah & Pemilikan Tempat Kediaman	3.7	3.8	4.1	3.8	3.2	3.6	3.7	3.9	3.7	3.4	<i>Real Estate & Ownership of Dwellings</i>
Perkhidmatan Persendirian	8.0	8.5	10.9	6.3	7.0	8.1	8.3	10.3	6.2	7.8	<i>Private Services</i>
Perkhidmatan Kerajaan	19.9	17.6	18.8	19.9	22.7	20.2	17.8	18.3	20.2	23.8	<i>Government Services</i>
KELUARAN DALAM NEGERI KASAR (KDNK)	100.0	100.0	100.0	100.0	100.0	100.0	100.0	100.0	100.0	100.0	GROSS DOMESTIC PRODUCT (GDP)

Jadual E.3 : Kadar Pertumbuhan KDNK Mengikut Jenis Aktiviti Ekonomi Pada Harga Semasa dan Tetap, Suku Tahunan 2009 dan 2010

Table E.3 : Growth Rates of GDP by Kind of Economic Activity at Current and Constant Prices, Quarterly 2009 and 2010

Jenis Aktiviti Ekonomi Pada Harga Semasa	Kadar Pertumbuhan (%) / Growth Rates (%)										Kind of Economic Activity At Current Prices
	2009	I	II	III	IV	2010	I	II	III	IV	
PERTANIAN, PERHUTANAN & PERIKANAN	9.4	8.1	2.8	4.2	22.1	(9.7)	(1.3)	(3.3)	(5.4)	(25.3)	AGRICULTURE, FORESTRY & FISHERY
SEKTOR INDUSTRI	(32.5)	(40.8)	(48.7)	(39.5)	6.2	10.3	25.6	29.8	5.8	(7.6)	INDUSTRIAL SECTOR
Perombongan	(36.7)	(55.3)	(56.4)	(43.3)	40.2	16.0	58.6	35.5	5.5	(9.3)	Mining
Pembuatan	(22.0)	40.9	(14.9)	(27.5)	(48.6)	(6.7)	(37.1)	19.5	8.7	(2.4)	Manufacturing
Pembinaan	(3.0)	1.0	3.5	(15.2)	4.2	1.2	(1.0)	3.6	0.7	1.7	Construction
Elektrik & Air	6.0	4.3	7.3	6.6	5.9	7.8	10.0	13.5	4.6	4.1	Electricity & Water
SEKTOR PERKHIDMATAN	2.1	2.4	2.6	0.2	3.0	4.1	4.2	3.2	4.1	4.9	SERVICES SECTOR
Pengangkutan & Perhubungan	4.2	2.5	5.3	3.9	5.7	3.7	2.4	6.8	2.4	3.9	Transport & Communication
Perdagangan	6.0	6.3	4.2	5.7	7.8	5.4	6.8	5.1	4.8	4.7	Trade
Kewangan	(3.3)	2.9	1.4	(13.8)	(1.3)	1.7	2.1	0.5	1.2	2.5	Finance
Hartanah & Pemilikan Tempat Kediaman	(0.8)	(0.1)	(2.2)	(0.4)	(0.4)	2.0	1.2	1.7	2.1	2.8	Real Estate & Ownership of Dwellings
Perkhidmatan Persendirian	4.3	2.0	6.1	1.0	7.0	2.7	2.0	0.4	4.0	5.0	Private Services
Perkhidmatan Kerajaan	1.7	1.9	1.0	1.8	2.1	5.6	6.0	4.5	5.7	6.0	Government Services
KELUARAN DALAM NEGERI KASAR (KDNK)	(23.5)	(29.9)	(35.8)	(30.4)	5.3	8.0	17.7	19.1	5.2	(4.0)	GROSS DOMESTIC PRODUCT (GDP)
Pada Harga Tetap	2009	I	II	III	IV	2010	I	II	III	IV	At Constant Prices
PERTANIAN, PERHUTANAN & PERIKANAN	5.7	8.6	(5.0)	3.4	16.0	(5.9)	(1.0)	3.7	(6.0)	(17.9)	AGRICULTURE, FORESTRY & FISHERY
SEKTOR INDUSTRI	(5.0)	(6.3)	(9.8)	(6.4)	1.6	1.7	4.1	9.9	2.4	(7.1)	INDUSTRIAL SECTOR
Perombongan	(3.4)	(8.4)	(9.5)	(2.6)	5.6	1.7	9.2	9.3	2.3	(10.5)	Mining
Pembuatan	(9.8)	(4.1)	(14.1)	(12.7)	(8.8)	1.5	(6.2)	12.8	2.5	(0.8)	Manufacturing
Pembinaan	(4.0)	2.8	0.3	(15.7)	1.8	2.4	(2.8)	6.4	2.7	3.4	Construction
Elektrik & Air	6.3	4.6	8.1	6.6	6.0	4.6	9.8	3.7	3.1	2.1	Electricity & Water
SEKTOR PERKHIDMATAN	2.1	1.9	2.0	1.3	3.0	3.8	3.8	3.1	3.9	4.4	SERVICES SECTOR
Pengangkutan & Perhubungan	5.3	2.9	6.3	4.5	7.9	6.4	6.6	6.7	6.2	5.9	Transport & Communication
Perdagangan	4.5	1.6	6.6	2.4	8.1	4.5	3.5	4.8	4.4	5.5	Trade
Kewangan	(2.4)	3.0	2.7	(11.9)	(1.9)	2.2	2.4	0.7	2.0	3.2	Finance
Hartanah & Pemilikan Tempat Kediaman	(0.3)	0.8	(1.3)	(0.6)	(0.2)	1.7	1.2	1.7	1.9	2.2	Real Estate & Ownership of Dwellings
Perkhidmatan Persendirian	4.2	1.4	0.7	9.0	7.9	3.5	1.3	1.2	2.5	9.3	Private Services
Perkhidmatan Kerajaan	1.4	1.8	0.9	1.2	1.5	3.9	5.3	3.6	4.3	3.0	Government Services
KELUARAN DALAM NEGERI KASAR (KDNK)	(1.8)	(2.8)	(4.5)	(2.9)	2.4	2.6	3.9	6.6	3.0	(1.9)	GROSS DOMESTIC PRODUCT (GDP)

Jadual E.4 : Pendeflasi Harga Tersirat dan Kadar Inflasi KDNK Mengikut Jenis Aktiviti Ekonomi, Suku Tahunan 2009 dan 2010

Table E.4 : Implicit Price Deflators and Inflation Rates of GDP by Kind of Economic Activity, Quarterly 2009 and 2010

Jenis Aktiviti Ekonomi Pendeflasi Harga Tersirat	Pendeflasi Harga Tersirat dan Kadar Inflasi/ <i>Implicit Price Deflators and Inflation Rates</i>										Kind of Economic Activity <i>Implicit Price Deflators</i>
	2009	I	II	III	IV	2010	I	II	III	IV	
PERTANIAN, PERHUTANAN & PERIKANAN	100.8	99.3	103.1	95.1	105.7	96.8	99.0	96.1	95.8	96.1	AGRICULTURE, FORESTRY & FISHERY
SEKTOR INDUSTRI	166.9	144.7	149.5	173.2	194.0	180.9	174.5	176.5	179.0	193.0	INDUSTRIAL SECTOR
Perlombongan	184.3	141.8	165.7	200.0	220.0	210.3	206.0	205.3	206.4	222.7	<i>Mining</i>
Pembuatan	141.7	162.3	125.1	127.8	147.0	130.3	108.8	132.4	135.5	144.5	<i>Manufacturing</i>
Pembinaan	108.5	106.6	107.5	108.5	111.1	107.2	108.5	104.6	106.4	109.3	<i>Construction</i>
Elektrik & Air	128.9	132.2	118.5	132.6	132.6	132.9	132.4	129.7	134.5	135.1	<i>Electricity & Water</i>
SEKTOR PERKHIDMATAN	99.5	103.1	103.0	97.6	95.3	99.8	103.5	103.1	97.7	95.8	SERVICES SECTOR
Pengangkutan & Perhubungan	100.0	114.4	98.2	96.9	92.2	97.5	109.8	98.2	93.4	90.5	<i>Transport & Communication</i>
Perdagangan	100.8	103.3	100.2	100.3	99.2	101.7	106.7	100.6	100.7	98.4	<i>Trade</i>
Kewangan	116.3	109.2	123.7	125.2	110.5	115.7	108.9	123.5	124.3	109.7	<i>Finance</i>
Hartanah & Pemilikan Tempat Kediaman	101.2	101.2	101.2	101.4	100.9	101.4	101.2	101.2	101.6	101.6	<i>Real Estate & Ownership of Dwellings</i>
Perkhidmatan Persendirian	99.0	95.5	99.5	96.7	103.7	98.2	96.1	98.7	98.1	99.7	<i>Private Services</i>
Perkhidmatan Kerajaan	95.3	102.9	103.0	91.2	88.4	96.8	103.6	103.9	92.4	91.0	<i>Government Services</i>
KELUARAN DALAM NEGERI KASAR (KDNK)	135.2	126.0	126.5	137.9	147.5	142.4	142.7	141.4	140.8	144.4	GROSS DOMESTIC PRODUCT (GDP)
Kadar Inflasi (%)	2009	I	II	III	IV	2010	I	II	III	IV	<i>Inflation Rates (%)</i>
PERTANIAN, PERHUTANAN & PERIKANAN	3.5	(0.5)	8.1	0.7	5.3	(4.0)	(0.4)	(6.8)	0.7	(9.1)	AGRICULTURE, FORESTRY & FISHERY
SEKTOR INDUSTRI	(28.9)	(36.7)	(43.1)	(35.4)	4.5	8.4	20.6	18.1	3.4	(0.5)	INDUSTRIAL SECTOR
Perlombongan	(34.5)	(51.2)	(51.8)	(41.8)	32.8	14.1	45.3	23.9	3.2	1.2	<i>Mining</i>
Pembuatan	(13.5)	47.0	(1.0)	(16.9)	(43.6)	(8.1)	(32.9)	5.9	6.1	(1.6)	<i>Manufacturing</i>
Pembinaan	1.0	(1.8)	3.1	0.7	2.4	(1.2)	1.8	(2.6)	(1.9)	(1.6)	<i>Construction</i>
Elektrik & Air	(0.3)	(0.3)	(0.7)	0.1	(0.1)	3.1	0.2	9.5	1.5	1.9	<i>Electricity & Water</i>
SEKTOR PERKHIDMATAN	0.0	0.6	0.6	(1.1)	0.0	0.3	0.4	0.1	0.2	0.5	SERVICES SECTOR
Pengangkutan & Perhubungan	(1.0)	(0.4)	(0.9)	(0.6)	(2.1)	(2.5)	(4.0)	0.0	(3.6)	(1.9)	<i>Transport & Communication</i>
Perdagangan	1.4	4.6	(2.3)	3.2	(0.2)	0.9	3.3	0.3	0.4	(0.8)	<i>Trade</i>
Kewangan	(0.9)	(0.0)	(1.3)	(2.2)	0.6	(0.5)	(0.3)	(0.2)	(0.7)	(0.7)	<i>Finance</i>
Hartanah & Pemilikan Tempat Kediaman	(0.5)	(0.9)	(0.9)	0.2	(0.3)	0.2	(0.0)	(0.0)	0.2	0.7	<i>Real Estate & Ownership of Dwellings</i>
Perkhidmatan Persendirian	0.1	0.6	5.3	(7.4)	(0.9)	(0.8)	0.6	(0.8)	1.4	(3.9)	<i>Private Services</i>
Perkhidmatan Kerajaan	0.4	0.0	0.2	0.6	0.6	1.6	0.7	0.8	1.4	3.0	<i>Government Services</i>
KELUARAN DALAM NEGERI KASAR (KDNK)	(22.1)	(27.9)	(32.8)	(28.3)	2.9	5.3	13.3	11.7	2.1	(2.1)	GROSS DOMESTIC PRODUCT (GDP)

Jadual F.1 : KDNK Mengikut Jenis Perbelanjaan Pada Harga Semasa dan Tetap, Suku Tahunan 2009 dan 2010

Table F.1 : GDP by Type of Expenditure at Current and Constant Prices, Quarterly 2009 and 2010

Jenis Perbelanjaan Pada Harga Semasa	Nilai (BND juta) / Value (BND million)										Type of Expenditure At Current Prices
	2009	I	II	III	IV	2010	I	II	III	IV	
PERBELANJAAN PENGGUNAAN PERSendirian	3,803.0	909.5	943.3	980.0	970.2	3,908.6	932.7	971.9	1,005.3	998.7	PERSONAL CONSUMPTION EXPENDITURE
PERBELANJAAN PENGGUNAAN KERAJAAN	3,635.5	952.7	829.8	871.3	981.7	3,780.7	838.4	988.0	911.6	1,042.7	GOVERNMENT CONSUMPTION EXPENDITURE
PEMBENTUKAN MODAL	2,740.8	773.3	523.1	675.8	768.6	2,678.3	602.8	604.3	778.0	693.3	CAPITAL FORMATION
Modal Tetap	2,739.6	772.7	522.7	675.5	768.7	2,677.6	602.5	604.2	777.8	693.1	Fixed Capital
Pembinaan	1,606.1	424.2	301.3	409.3	471.3	1,608.8	401.3	324.7	410.7	472.1	Construction
Mesin dan Peralatan	1,133.6	348.5	221.5	266.2	297.4	1,068.8	201.2	279.5	367.1	221.0	Machinery and Equipment
Perubahan dalam Stok	1.2	0.6	0.4	0.3	(0.1)	0.7	0.2	0.1	0.2	0.1	Change in Stocks
EKSPORT BARANGAN DAN PERKHIDMATAN	11,362.7	3,376.1	2,368.4	2,628.1	2,990.1	13,736.6	3,223.3	3,000.9	3,365.4	4,147.0	EXPORTS OF GOODS AND SERVICES
Eksport Barangan	10,034.6	3,068.9	2,033.2	2,286.3	2,646.2	12,302.1	2,874.6	2,650.1	3,002.7	3,774.7	Exports of Goods
Eksport Perkhidmatan	1,328.1	307.2	335.2	341.8	343.9	1,434.5	348.7	350.8	362.7	372.3	Exports of Services
tolak : IMPORT BARANGAN DAN PERKHIDMATAN	5,587.2	1,581.9	1,336.7	1,268.3	1,400.4	5,544.7	1,282.5	1,434.0	1,432.3	1,395.9	less : IMPORTS OF GOODS AND SERVICES
Import Barangan	3,504.1	1,078.0	815.7	738.6	871.9	3,349.2	742.1	894.9	882.2	830.0	Imports of Goods
Import Perkhidmatan	2,083.1	503.9	521.0	529.7	528.5	2,195.5	540.4	539.1	550.1	565.9	Imports of Services
Diskrepansi Perangkaan	(343.4)	(866.0)	(73.3)	8.7	587.1	(1,692.1)	(120.3)	(256.6)	(531.0)	(784.3)	Statistical Discrepancy
KELUARAN DALAM NEGERI KASAR (KDNK)	15,611.4	3,563.7	3,254.6	3,895.7	4,897.4	16,867.3	4,194.4	3,874.6	4,096.9	4,701.5	GROSS DOMESTIC PRODUCT (GDP)
Pada Harga Tetap	2009	I	II	III	IV	2010	I	II	III	IV	At Constant Prices
PERBELANJAAN PENGGUNAAN PERSendirian	3,929.9	888.6	1,067.9	1,081.7	891.6	4,010.8	901.5	1,095.5	1,101.3	912.6	PERSONAL CONSUMPTION EXPENDITURE
PERBELANJAAN PENGGUNAAN KERAJAAN	3,919.0	922.8	839.0	1,009.2	1,148.0	4,055.2	897.3	895.4	1,053.5	1,209.0	GOVERNMENT CONSUMPTION EXPENDITURE
PEMBENTUKAN MODAL	2,486.3	707.7	495.0	617.1	666.5	2,398.3	552.0	544.6	637.6	664.1	CAPITAL FORMATION
Modal Tetap	2,485.9	707.4	494.8	617.0	666.7	2,397.6	551.9	544.3	637.4	664.0	Fixed Capital
Pembinaan	1,463.2	393.4	277.8	368.8	423.3	1,491.5	383.0	301.2	372.1	435.2	Construction
Mesin dan Peralatan	1,022.7	314.0	217.1	248.2	243.4	906.1	168.9	243.1	265.2	228.8	Machinery and Equipment
Perubahan dalam Stok	0.4	0.3	0.2	0.1	(0.2)	0.7	0.1	0.2	0.2	0.1	Change in Stocks
EKSPORT BARANGAN DAN PERKHIDMATAN	6,229.9	1,670.4	1,331.8	1,552.0	1,675.6	5,744.1	1,734.5	1,477.7	446.8	2,085.3	EXPORTS OF GOODS AND SERVICES
Eksport Barangan	5,284.4	1,451.7	1,093.2	1,308.7	1,430.8	4,723.0	1,486.2	1,227.9	188.6	1,820.2	Exports of Goods
Eksport Perkhidmatan	945.4	218.7	238.6	243.3	244.8	1,021.2	248.2	249.7	258.2	265.0	Exports of Services
tolak : IMPORT BARANGAN DAN PERKHIDMATAN	5,515.2	1,593.8	1,285.1	1,223.7	1,412.5	5,500.4	1,246.1	1,418.8	1,447.8	1,387.7	less : IMPORTS OF GOODS AND SERVICES
Import Barangan	3,772.1	1,175.1	848.9	780.5	967.6	3,654.1	793.9	964.9	984.1	911.2	Imports of Goods
Imports Perkhidmatan	1,743.1	418.7	436.2	443.2	444.9	1,846.3	452.2	453.9	463.7	476.5	Imports of Services
Diskrepansi Perangkaan	496.5	233.0	123.5	(210.3)	350.4	1,138.5	100.7	146.6	1,118.3	(227.1)	Statistical Discrepancy
KELUARAN DALAM NEGERI KASAR (KDNK)	11,546.4	2,828.8	2,572.1	2,825.9	3,319.6	11,846.5	2,939.8	2,740.8	2,909.6	3,256.2	GROSS DOMESTIC PRODUCT (GDP)

Jadual F.2 : Peratus Agihan KDNK Mengikut Jenis Perbelanjaan Pada Harga Semasa dan Tetap, Suku Tahunan 2009 dan 2010

Table F.2 : Per cent Distribution of GDP by Type of Expenditure at Current and Constant Prices, Quarterly 2009 and 2010

Jenis Perbelanjaan Pada Harga Semasa	Agihan (%) / Distribution (%)										Type of Expenditure At Current Prices
	2009	I	II	III	IV	2010	I	II	III	IV	
PERBELANJAAN PENGGUNAAN PERSENDIRIAN	24.4	25.5	29.0	25.2	19.8	23.2	22.2	25.1	24.5	21.2	PERSONAL CONSUMPTION EXPENDITURE
PERBELANJAAN PENGGUNAAN KERAJAAN	23.3	26.7	25.5	22.4	20.0	22.4	20.0	25.5	22.3	22.2	GOVERNMENT CONSUMPTION EXPENDITURE
PEMBENTUKAN MODAL	17.6	21.7	16.1	17.3	15.7	15.9	14.4	15.6	19.0	14.7	CAPITAL FORMATION
Modal Tetap	17.5	21.7	16.1	17.3	15.7	15.9	14.4	15.6	19.0	14.7	Fixed Capital
Pembinaan	10.3	11.9	9.3	10.5	9.6	9.5	9.6	8.4	10.0	10.0	Construction
Mesin dan Peralatan	7.3	9.8	6.8	6.8	6.1	6.3	4.8	7.2	9.0	4.7	Machinery and Equipment
Perubahan dalam Stok	0.0	0.0	0.0	0.0	(0.0)	0.0	0.0	0.0	0.0	0.0	Change in Stocks
EKSPORT BARANGAN DAN PERKHIDMATAN	72.8	94.7	72.8	67.5	61.1	81.4	76.8	77.5	82.1	88.2	EXPORTS OF GOODS AND SERVICES
Eksport Barangan	64.3	86.1	62.5	58.7	54.0	72.9	68.5	68.4	73.3	80.3	Exports of Goods
Eksport Perkhidmatan	8.5	8.6	10.3	8.8	7.0	8.5	8.3	9.1	8.9	7.9	Exports of Services
tolak : IMPORT BARANGAN DAN PERKHIDMATAN	35.8	44.4	41.1	32.6	28.6	32.9	30.6	37.0	35.0	29.7	less : IMPORTS OF GOODS AND SERVICES
Import Barangan	22.4	30.2	25.1	19.0	17.8	19.9	17.7	23.1	21.5	17.7	Imports of Goods
Import Perkhidmatan	13.3	14.1	16.0	13.6	10.8	13.0	12.9	13.9	13.4	12.0	Imports of Services
Diskrepani Perangkaan	(2.2)	(24.3)	(2.3)	0.2	12.0	(10.0)	(2.9)	(6.6)	(13.0)	(16.7)	Statistical Discrepancy
KELUARAN DALAM NEGERI KASAR (KDNK)	100.0	100.0	100.0	100.0	100.0	100.0	100.0	100.0	100.0	100.0	GROSS DOMESTIC PRODUCT (GDP)
Pada Harga Tetap	2009	I	II	III	IV	2010	I	II	III	IV	At Constant Prices
PERBELANJAAN PENGGUNAAN PERSENDIRIAN	34.0	31.4	41.5	38.3	26.9	33.9	30.7	40.0	37.9	28.0	PERSONAL CONSUMPTION EXPENDITURE
PERBELANJAAN PENGGUNAAN KERAJAAN	33.9	32.6	32.6	35.7	34.6	34.2	30.5	32.7	36.2	37.1	GOVERNMENT CONSUMPTION EXPENDITURE
PEMBENTUKAN MODAL	21.5	25.0	19.2	21.8	20.1	20.2	18.8	19.9	21.9	20.4	CAPITAL FORMATION
Modal Tetap	21.5	25.0	19.2	21.8	20.1	20.2	18.8	19.9	21.9	20.4	Fixed Capital
Pembinaan	12.7	13.9	10.8	13.1	12.8	12.6	13.0	11.0	12.8	13.4	Construction
Mesin dan Peralatan	8.9	11.1	8.4	8.8	7.3	7.6	5.7	8.9	9.1	7.0	Machinery and Equipment
Perubahan dalam Stok	0.0	0.0	0.0	0.0	(0.0)	0.0	0.0	0.0	0.0	0.0	Change in Stocks
EKSPORT BARANGAN DAN PERKHIDMATAN	54.0	59.1	51.8	54.9	50.5	48.5	59.0	53.9	15.4	64.0	EXPORTS OF GOODS AND SERVICES
Eksport Barangan	45.8	51.3	42.5	46.3	43.1	39.9	50.6	44.8	6.5	55.9	Exports of Goods
Eksport Perkhidmatan	8.2	7.7	9.3	8.6	7.4	8.6	8.4	9.1	8.9	8.1	Exports of Services
tolak : IMPORT BARANGAN DAN PERKHIDMATAN	47.8	56.3	50.0	43.3	42.6	46.4	42.4	51.8	49.8	42.6	less : IMPORTS OF GOODS AND SERVICES
Import Barangan	32.7	41.5	33.0	27.6	29.1	30.8	27.0	35.2	33.8	28.0	Imports of Goods
Imports Perkhidmatan	15.1	14.8	17.0	15.7	13.4	15.6	15.4	16.6	15.9	14.6	Imports of Services
Diskrepani Perangkaan	4.3	8.2	4.8	(7.4)	10.6	9.6	3.4	5.3	38.4	(7.0)	Statistical Discrepancy
KELUARAN DALAM NEGERI KASAR (KDNK)	100.0	100.0	100.0	100.0	100.0	100.0	100.0	100.0	100.0	100.0	GROSS DOMESTIC PRODUCT (GDP)

Jadual F.3 : Kadar Pertumbuhan KDNK Mengikut Jenis Perbelanjaan Pada Harga Semasa dan Tetap, Suku Tahunan 2009 dan 2010

Table F.3 : Growth Rates of GDP by Type of Expenditure at Current and Constant Prices, Quarterly 2009 and 2010

Jenis Perbelanjaan Pada Harga Semasa	Kadar Pertumbuhan (%) / Growth Rates (%)										Type of Expenditure At Current Prices
	2009	I	II	III	IV	2010	I	II	III	IV	
PERBELANJAAN PENGGUNAAN PERSENDIRIAN	5.4	4.8	3.2	3.8	9.9	2.8	2.6	3.0	2.6	2.9	PERSONAL CONSUMPTION EXPENDITURE
PERBELANJAAN PENGGUNAAN KERAJAAN	4.0	5.1	(0.4)	1.9	9.0	4.0	(12.0)	19.1	4.6	6.2	GOVERNMENT CONSUMPTION EXPENDITURE
PEMBENTUKAN MODAL	(1.7)	22.1	(4.1)	(20.2)	0.8	(2.3)	(22.1)	15.5	15.1	(9.8)	CAPITAL FORMATION
Modal Tetap	(1.8)	21.7	(4.0)	(20.3)	0.9	(2.3)	(22.0)	15.6	15.1	(9.8)	Fixed Capital
Pembinaan	0.3	1.9	1.7	(3.8)	1.7	0.2	(5.4)	7.8	0.3	0.2	Construction
Mesin dan Peralatan	(4.6)	59.3	(10.9)	(36.9)	(0.5)	(5.7)	(42.3)	26.2	37.9	(25.7)	Machinery and Equipment
EKSPORT BARANGAN DAN PERKHIDMATAN	(28.9)	(10.3)	(40.3)	(40.2)	(22.3)	20.9	(4.5)	26.7	28.1	38.7	EXPORTS OF GOODS AND SERVICES
Eksport Barangan	(31.9)	(11.3)	(44.4)	(44.2)	(25.1)	22.6	(6.3)	30.3	31.3	42.6	Exports of Goods
Eksport Perkhidmatan	8.2	1.1	6.7	14.5	10.4	8.0	13.5	4.7	6.1	8.3	Exports of Services
tolak : IMPORT BARANGAN DAN PERKHIDMATAN	(0.8)	25.0	2.4	(23.7)	0.1	(0.8)	(18.9)	7.3	12.9	(0.3)	less : IMPORTS OF GOODS AND SERVICES
Import Barangan	(3.9)	38.7	1.8	(36.6)	(3.5)	(4.4)	(31.2)	9.7	19.4	(4.8)	Imports of Goods
Import Perkhidmatan	4.9	3.2	3.3	6.7	6.5	5.4	7.2	3.5	3.9	7.1	Imports of Services
KELUARAN DALAM NEGERI KASAR (KDNK)	(23.5)	(29.9)	(35.8)	(30.4)	5.3	8.0	17.7	19.1	5.2	(4.0)	GROSS DOMESTIC PRODUCT (GDP)
Pada Harga Tetap	2009	I	II	III	IV	2010	I	II	III	IV	At Constant Prices
PERBELANJAAN PENGGUNAAN PERSENDIRIAN	4.7	9.2	2.6	2.8	5.4	2.1	1.4	2.6	1.8	2.4	PERSONAL CONSUMPTION EXPENDITURE
PERBELANJAAN PENGGUNAAN KERAJAAN	5.3	12.8	(0.1)	7.2	2.2	3.5	(2.8)	6.7	4.4	5.3	GOVERNMENT CONSUMPTION EXPENDITURE
PEMBENTUKAN MODAL	(0.3)	18.5	0.6	(16.3)	(0.1)	(3.5)	(22.0)	10.0	3.3	(0.4)	CAPITAL FORMATION
Modal Tetap	(0.5)	18.2	0.3	(16.4)	(0.1)	(3.6)	(22.0)	10.0	3.3	(0.4)	Fixed Capital
Pembinaan	1.3	2.5	1.7	(0.3)	1.3	1.9	(2.6)	8.5	0.9	2.8	Construction
Mesin dan Peralatan	(2.9)	46.4	(1.5)	(32.6)	(2.5)	(11.4)	(46.2)	12.0	6.9	(6.0)	Machinery and Equipment
EKSPORT BARANGAN DAN PERKHIDMATAN	(5.3)	(3.1)	(12.9)	(1.1)	(4.4)	(7.8)	3.8	11.0	(71.2)	24.4	EXPORTS OF GOODS AND SERVICES
Eksport Barangan	(7.3)	(3.7)	(16.3)	(3.6)	(6.5)	(10.6)	2.4	12.3	(85.6)	27.2	Exports of Goods
Eksport Perkhidmatan	8.1	0.9	6.7	14.5	10.4	8.0	13.5	4.7	6.1	8.3	Exports of Services
tolak : IMPORT BARANGAN DAN PERKHIDMATAN	(0.8)	32.4	3.0	(28.5)	1.2	(0.3)	(21.8)	10.4	18.3	(1.8)	less : IMPORTS OF GOODS AND SERVICES
Import Barangan	(3.6)	46.1	2.6	(39.9)	(1.5)	(3.1)	(32.4)	13.7	26.1	(5.8)	Imports of Goods
Imports Perkhidmatan	5.9	4.8	3.9	7.2	7.6	5.9	8.0	4.1	4.6	7.1	Imports of Services
KELUARAN DALAM NEGERI KASAR (KDNK)	(1.8)	(2.8)	(4.5)	(2.9)	2.4	2.6	3.9	6.6	3.0	(1.9)	GROSS DOMESTIC PRODUCT (GDP)

Jadual F.4 : Pendeflasi Harga Tersirat dan Kadar Inflasi KDNK Mengikut Jenis Perbelanjaan, Suku Tahunan 2009 dan 2010

Table F.4 : Implicit Price Deflators and Inflation Rates of GDP by Type of Expenditure, Quarterly 2009 and 2010

Jenis Perbelanjaan Pendeflasi Harga Tersirat	Pendeflasi Harga Tersirat dan Kadar Inflasi/					Implicit Price Deflators and Inflation Rates					Type of Expenditure
	2009	I	II	III	IV	2010	I	II	III	IV	Implicit Price Deflators
PERBELANJAAN PENGGUNAAN PERSENDIRIAN	96.8	102.3	88.3	90.6	108.8	97.5	103.5	88.7	91.3	109.4	PERSONAL CONSUMPTION EXPENDITURE
PERBELANJAAN PENGGUNAAN KERAJAAN	92.8	103.2	98.9	86.3	85.5	93.2	93.4	110.3	86.5	86.2	GOVERNMENT CONSUMPTION EXPENDITURE
PEMBENTUKAN MODAL	110.2	109.3	105.7	109.5	115.3	111.7	109.2	111.0	122.0	104.4	CAPITAL FORMATION
Modal Tetap	110.2	109.2	105.6	109.5	115.3	111.7	109.2	111.0	122.0	104.4	Fixed Capital
Pembinaan	109.8	107.8	108.5	111.0	111.3	107.9	104.8	107.8	110.4	108.5	Construction
Mesin dan Peralatan	110.8	111.0	102.0	107.3	122.2	118.0	119.1	115.0	138.4	96.6	Machinery and Equipment
EKSPORT BARANGAN DAN PERKHIDMATAN	182.4	202.1	177.8	169.3	178.4	239.1	185.8	203.1	753.3	198.9	EXPORTS OF GOODS AND SERVICES
Eksport Barangan	189.9	211.4	186.0	174.7	184.9	260.5	193.4	215.8	1,592.4	207.4	Exports of Goods
Eksport Perkhidmatan	140.5	140.5	140.5	140.5	140.5	140.5	140.5	140.5	140.5	140.5	Exports of Services
tolak : IMPORT BARANGAN DAN PERKHIDMATAN	101.3	99.2	104.0	103.6	99.1	100.8	102.9	101.1	98.9	100.6	less : IMPORTS OF GOODS AND SERVICES
Import Barangan	92.9	91.7	96.1	94.6	90.1	91.7	93.5	92.7	89.6	91.1	Imports of Goods
Import Perkhidmatan	119.5	120.3	119.4	119.5	118.8	118.9	119.5	118.8	118.6	118.8	Imports of Services
KELUARAN DALAM NEGERI KASAR (KDNK)	135.2	126.0	126.5	137.9	147.5	142.4	142.7	141.4	140.8	144.4	GROSS DOMESTIC PRODUCT (GDP)
Kadar Inflasi (%)	2009	I	II	III	IV	2010	I	II	III	IV	Inflation Rates (%)
PERBELANJAAN PENGGUNAAN PERSENDIRIAN	0.7	(4.0)	0.7	1.0	4.3	0.7	1.1	0.4	0.8	0.6	PERSONAL CONSUMPTION EXPENDITURE
PERBELANJAAN PENGGUNAAN KERAJAAN	(1.2)	(6.9)	(0.3)	(5.0)	6.6	0.5	(9.5)	11.6	0.2	0.9	GOVERNMENT CONSUMPTION EXPENDITURE
PEMBENTUKAN MODAL	(1.4)	3.1	(4.6)	(4.6)	0.8	1.3	(0.1)	5.0	11.4	(9.5)	CAPITAL FORMATION
Modal Tetap	(1.3)	2.9	(4.3)	(4.6)	1.0	1.3	(0.1)	5.1	11.4	(9.5)	Fixed Capital
Pembinaan	(1.0)	(0.6)	(0.0)	(3.4)	0.4	(1.7)	(2.8)	(0.6)	(0.6)	(2.6)	Construction
Mesin dan Peralatan	(1.8)	8.9	(9.5)	(6.4)	2.1	6.4	7.3	12.7	29.0	(20.9)	Machinery and Equipment
EKSPORT BARANGAN DAN PERKHIDMATAN	(24.9)	(7.4)	(31.5)	(39.5)	(18.7)	31.1	(8.0)	14.2	344.8	11.4	EXPORTS OF GOODS AND SERVICES
Eksport Barangan	(26.6)	(7.8)	(33.6)	(42.1)	(19.9)	37.2	(8.5)	16.0	811.5	12.1	Exports of Goods
Eksport Perkhidmatan	0.0	0.2	(0.0)	(0.0)	0.0	(0.0)	(0.0)	0.0	(0.0)	(0.0)	Exports of Services
tolak : IMPORT BARANGAN DAN PERKHIDMATAN	(0.0)	(5.6)	(0.6)	6.8	(1.1)	(0.5)	3.7	(2.8)	(4.5)	1.5	less : IMPORTS OF GOODS AND SERVICES
Import Barangan	(0.3)	(5.1)	(0.7)	5.4	(2.0)	(1.3)	1.9	(3.5)	(5.3)	1.1	Imports of Goods
Imports Perkhidmatan	(0.9)	(1.6)	(0.5)	(0.5)	(1.1)	(0.5)	(0.7)	(0.6)	(0.7)	(0.0)	Imports of Services
KELUARAN DALAM NEGERI KASAR (KDNK)	(22.1)	(27.9)	(32.8)	(28.3)	2.9	5.3	13.3	11.7	2.1	(2.1)	GROSS DOMESTIC PRODUCT (GDP)

Nota Teknikal

Technical Notes

Seksyen 3

Nota Teknikal

Sistem Akaun Negara (SNA) memberikan rangkakerja perakaunan yang komprehensif dan konsisten bagi pemantauan perkembangan ekonomi. Rangkakerja SNA menunjukkan transaksi yang dibuat dalam ekonomi semasa tempoh berkenaan. Ia mengukur nilai apa yang telah dihasilkan, siapa yang menghasilkannya, siapa yang menggunakan produk tersebut dan tujuan ianya digunakan. Salah satu agregat penting yang diperolehi dari akaun negara ialah Keluaran Dalam Negeri Kasar (KDNK).

Siri KDNK yang baru berasaskan tahun 2000 bagi Negara Brunei Darussalam adalah konsisten dengan SNA 1993. Perenggan-perenggan berikut memberikan penerangan ringkas mengenai konsep dan definisi yang digunakan, serta sumber data dan kaedah yang digunakan.

Konsep dan Definisi

Keluaran Dalam Negeri Kasar (KDNK)

KDNK adalah ukuran bagi jumlah nilai pengeluaran barang-barang dan perkhidmatan oleh unit pengeluar yang menetap dalam sesebuah ekonomi dalam tempoh perakaunan, biasanya satu tahun atau satu suku tahun.

KDNK boleh dikira menggunakan tiga pendekatan :

- (a) pendekatan pengeluaran,
- (b) pendekatan perbelanjaan, dan
- (c) pendekatan pendapatan.

Ketiga-tiga pendekatan ini memberikan komponen KDNK dari perspektif yang berbeza. Secara teori, pendekatan yang berlainan ini sepatutnya memberikan nilai KDNK yang sama. Walau bagaimanapun, secara praktiknya, oleh kerana sumber data dan kaedah membuat anggaran adalah berlainan, nilai KDNK yang dihasilkan dari pendekatan-pendekatan ini mungkin tidak bersamaan. Perbezaan ini digelar sebagai diskrepansi perangkaan (SD).

Di dalam siri KDNK berasaskan tahun 2000 bagi Negara Brunei Darussalam, dua pendekatan digunakan, iaitu pendekatan pengeluaran dan pendekatan perbelanjaan.

KDNK Mengikut Pendekatan Pengeluaran

Di bawah pendekatan ini, KDNK ialah jumlah Nilai Tambah Kasar (GVA) bagi industri dalam ekonomi. GVA dikira bagi setiap aktiviti ekonomi dan kemudiannya dicampur untuk mendapatkan jumlah nilai tambah kasar atau KDNK bagi keseluruhan ekonomi, iaitu

$$\mathbf{KDNK = \Sigma GVA}$$

KDNK diperolehi dengan menolak nilai barang-barang dan perkhidmatan yang digunakan dalam proses pengeluaran (digelar sebagai penggunaan perantaraan, IC) daripada nilai barang-barang dan perkhidmatan yang dihasilkan (disebut sebagai keluaran kasar, GO), iaitu

$$\mathbf{GVA = GO - IC}$$

KDNK mengikut pengeluaran akan menunjukkan sumbangan aktiviti ekonomi yang berlainan kepada perkembangan ekonomi sesebuah negara.

KDNK mengikut pendekatan pengeluaran ditunjukkan mengikut jenis aktiviti ekonomi, berpandukan **Klasifikasi Standard Industri Negara Brunei Darussalam (BDSIC 2001)**, yang berasaskan **Klasifikasi Standard Industri Antarabangsa (ISIC), Semakan 3**.

KDNK Mengikut Pendekatan Perbelanjaan

Pendekatan ini menilai penggunaan akhir bagi pengeluaran negara. Komponen perbelanjaan KDNK adalah berasaskan pembelian barang dan perkhidmatan untuk penggunaan akhir, dan kadangkala disebut sebagai agregat 'permintaan akhir' atau 'perbelanjaan akhir'. Pembelian perantaraan barang dan perkhidmatan untuk pemerosesan selanjutnya adalah dikecualikan.

KDNK ialah jumlah perbelanjaan penggunaan persendirian (PCE), perbelanjaan penggunaan kerajaan (GCE), pembentukan modal kasar atau pelaburan (I) dan eksport (X) dikurangkan import (M) barang dan perkhidmatan, iaitu :

$$\mathbf{KDNK = PCE + GCE + I + X - M}$$

Setiap komponen perbelanjaan mempunyai kandungan import. Oleh kerana KDNK ialah jumlah pengeluaran ekonomi dalam kawasan domestik, kandungan import ini mesti dikeluarkan. Kandungan import ditolak pada paras agregat kerana secara praktikal ianya tidak dapat ditolak dari setiap komponen.

Diskrepansi perangkaan (SD) dicampur kepada KDNK perbelanjaan untuk mencatatkan perbezaan dalam nilai KDNK daripada pendekatan pengeluaran dan perbelanjaan.

KDNK Pada Harga Semasa dan Tetap

Bagi membolehkan berbagai jenis barang dan perkhidmatan dicampur dalam satu unit ukuran yang sama, KDNK dikira dalam nilai matawang. KDNK pada harga semasa merujuk kepada KDNK yang dikira pada harga semasa dalam tempoh perakaunan. KDNK pada harga semasa juga disebut sebagai KDNK nominal.

Memandangkan harga barang dan perkhidmatan berubah dari satu masa ke satu masa, perubahan dalam nilai KDNK mungkin disebabkan oleh perubahan dalam kuantiti barang dan perkhidmatan yang dihasilkan atau disebabkan perubahan harga. Oleh yang demikian, kesan dari perubahan harga perlu diasingkan untuk membolehkan perbandingan yang bermakna untuk melihat perubahan dalam paras

atau kuantiti aktiviti ekonomi sepanjang masa tertentu. Ini memerlukan pertukaran KDNK harga semasa kepada harga tetap. KDNK pada harga tetap juga digelar KDNK sebenar.

Pendeflasi KDNK

Pendeflasi Harga Tersirat (IPD) bagi KDNK (atau Pendeflasi KDNK secara ringkas) biasa digunakan sebagai pengukur inflasi keseluruhan dalam ekonomi. IPD bagi KDNK didapatkan dengan membahagi KDNK harga semasa dengan KDNK harga tetap dan dikali dengan 100. Begitu juga, dengan membahagi setiap komponen KDNK harga semasa dengan komponen yang sama pada harga tetap, pendeflasi harga bagi komponen berasingan dapat diperolehi. Ini disebut sebagai Nombor Indeks Harga Tersirat (IPIN). Kadar perubahan bagi pendeflasi KDNK akan memberikan kadar inflasi bagi keseluruhan ekonomi.

Kedua-dua pendeflasi KDNK dan indeks harga pengguna (IHP) digunakan sebagai pengukur inflasi. Walau bagaimanapun, pergerakan pendeflasi KDNK mungkin berlainan jika dibanding dengan IHP kerana IHP hanya mengukur perubahan harga di dalam barang dan perkhidmatan yang dibeli oleh isi rumah, iaitu perbelanjaan akhir isi rumah; manakala pendeflasi KDNK mengambilkira kesemua perubahan harga yang berkaitan dengan komponen pengeluaran dan perbelanjaan.

Kadar Pertumbuhan KDNK

Perubahan dalam KDNK harga semasa, yang dikira oleh kadar pertumbuhan, menggambarkan kesan cantuman dari perubahan dalam paras harga dan juga kuantiti pengeluaran barang dan perkhidmatan dari satu tempoh ke satu tempoh yang lain.

Kadar pertumbuhan bagi KDNK pada harga tetap memberikan ukuran bagi pertumbuhan 'sebenar' dalam ekonomi kerana kesan dari perubahan harga telah dikecualikan.

Kadar pertumbuhan tahunan, r , dalam peratus bagi KDNK harga tetap (misalnya bagi 2007 dibandingkan dengan 2006) dikira seperti berikut :

$$r = ((\text{KDNK}_{2007} / \text{KDNK}_{2006}) - 1) \times 100$$

Bagi perbandingan KDNK sebenar bagi tempoh beberapa tahun, kadar pertumbuhan purata, R, dalam peratus (misalnya bagi 2005 dibandingkan dengan 2001) dikira seperti berikut :

$$R = (\text{Ln} (\text{KDNK}_{2005} / \text{KDNK}_{2001}) / 4) \times 100$$

KDNK Per Kapita

KDNK per kapita diperolehi dengan membahagi KDNK pada harga semasa dengan saiz penduduk. Ini digunakan untuk menunjukkan tahap perkembangan ekonomi sebagai perbandingan dengan negara-negara lain. KDNK per kapita juga dikira dalam harga tetap. Perubahan dalam KDNK per kapita pada harga tetap digunakan untuk menunjukkan kesejahteraan keseluruhan dalam ekonomi.

Sumber Data

Data-data Kajian

Kebanyakan maklumat yang digunakan dalam akaun pengeluaran telah diperolehi dari hasil Kajian Suku Tahun Perusahaan/Perniagaan (QSB). QSB ialah kajian ringkas bagi enterpris besar dan sederhana di negara ini, dan oleh itu secara efektif mewakili hampir 60 peratus dari jumlah nilai tambah dalam ekonomi. Data bagi penunjuk asas seperti pendapatan, jumlah pekerja dan pampasan pekerja telah ditanyakan dalam kajian tersebut bagi setiap suku tahun dalam tempoh rujukan.

Harga yang dikumpulkan bagi penyusunan IHP telah digunakan untuk membuat indeks harga bagi mendeflasi komponen akaun negara.

Data-data Pentadbiran

Bagi transaksi kerajaan dan lain-lain aktiviti perusahaan yang tidak diliputi dalam QSB, berbagai data pentadbiran digunakan. Kebanyakan data ini adalah hasil sampingan dari fungsi pentadbiran dan pengawasan kerajaan.

Bagi sektor kerajaan, maklumat dari Jabatan Perbendaharaan, Kementerian Kewangan telah digunakan. GVA bagi enterpris jabatan juga telah diperolehi daripada data yang sama. Data kuantiti pengeluaran bagi pertanian telah didapatkan dari Jabatan Pertanian, Kementerian Perindustrian dan Sumber-Sumber Utama.

Data pengeluaran, penggunaan dan eksport bagi minyak dan gas diperolehi dari Unit Petroleum, Jabatan Perdana Menteri. Sebahagian data telah juga diperolehi secara langsung dari Syarikat Brunei Shell Petroleum Sdn Bhd (BSP) dan Brunei LNG Sdn Bhd (BLNG).

Perangkaan Perdagangan Luar (ETS) mengandungi import dan export barangan adalah salah satu sumber data utama. Laporan ETS disusun dan dikeluarkan oleh JPKE tetapi data dikumpulkan dan diproses oleh Jabatan Kastam dan Eksais DiRaja, Kementerian Kewangan.

Lain-lain Keluaran Perangkaan JPKE

IHP yang terkini ialah indeks asas tetap dengan tahun 2002 sebagai tahun asas. Oleh itu, bagi kegunaan akaun negara, IHP keseluruhan dan bagi komponen telah diubah tahun asas dan kewajarannya dengan menggunakan tahun 2000 sebagai tahun asas.

Eksport dan import perkhidmatan diperolehi dari Imbangan Pembayaran (BOP) yang disusun oleh JPKE.

Buku Perangkaan Tahunan Negara Brunei Darussalam (BDSYB) dan Brunei Economic Bulletin (BEB) memberikan maklumat yang banyak yang digunakan dalam membuat anggaran atau digunakan secara tidak langsung untuk menilai data yang digunakan dalam membuat anggaran.

Kaedah

Akaun tahunan telah dianggarkan menggunakan dua pendekatan dalam pengiraan KDNK. Pertama ialah akaun pengeluaran yang banyak berasaskan hasil QSB; dan kedua ialah akaun perbelanjaan yang menggunakan banyak data pentadbiran termasuk akaun kerajaan, ETS dan BOP.

Akaun Pengeluaran

Untuk anggaran keluaran bagi sektor yang mempunyai data kuantiti pengeluaran seperti pertanian, perlombongan dan pembuatan LNG, keluaran didefinisikan sebagai kuantiti pengeluaran dikali dengan harga pengeluar. GVA dianggarkan melalui keluaran dikali dengan nisbah nilai tambah kasar (GVAR). GVAR dikira dari data Banci Ekonomi (EC) 2002, di mana :

$$\mathbf{GVAR = GVA / GO}$$

Bagi sektor dengan data kuantiti pengeluaran, anggaran harga tetap dikira dengan menilai pengeluaran semasa menggunakan harga tahun asas.

Indeks komposit mengandungi indeks pampasan purata dan keseluruhan IHP dengan kewajaran bahagian nilai tambah, telah digunakan untuk mendeflasi GVA bagi sebahagian sektor. Sebahagian pendeflasi diambil dari komponen IHP, manakala sebahagian lagi dihasilkan sebagai indeks harga kegunaan tertentu seperti indeks harga eksport.

Akaun Perbelanjaan

Bagi sebahagian komponen perbelanjaan dalam akaun, teknik yang biasa digunakan adalah berasaskan Jadual Bekalan dan Kegunaan (*Supply and Use Tables - SUT*). Prosedur anggaran ini memerlukan persamaan dalam jumlah bekalan barang dan perkhidmatan dengan jumlah penggunaan. Sejenis SUT atau digelar sebagai pendekatan aliran komoditi digunakan bagi anggaran perbelanjaan penggunaan persendirian (PCE) dan pembentukan modal tetap kasar (GFCF).

Jumlah bekalan mengandungi pengeluaran tempatan dan import barang dan perkhidmatan, dengan disesuaikan bagi kenaikan untuk perdagangan, pengangkutan dan juga cukai. Bagi pengeluaran tempatan, anggaran keluaran berasaskan QSB telah digunakan. Import barang didapati dari ETS; manakala import perkhidmatan diambil dari BOP.

Bagi sektor pembinaan, nilai pembinaan yang dilaporkan dalam EC dan di ekstrapolasi menggunakan penunjuk berasaskan QSB telah diteliti menggunakan pendekatan bahan binaan. Ini adalah sebahagian dari pendekatan aliran komoditi di

mana kuantiti dan nilai bahan binaan digunakan sebagai penunjuk tren dalam sektor pembinaan.

Anggaran bagi perbelanjaan akhir kerajaan dan nilai tambah dari sektor perkhidmatan kerajaan dibuat dengan mengenalpasti dari perbelanjaan terperinci kerajaan, perbelanjaan yang termasuk di bawah nilai tambah dan penggunaan perantaraan bagi sektor kerajaan. GVA sektor kerajaan dideflasikan menggunakan IHP keseluruhan.

Import dan eksport diambil langsung dari ETS; sementara import dan eksport perkhidmatan adalah dari anggaran yang sama dalam BOP.

Import barang pada harga tetap dikira dengan membahagi anggaran harga semasa dengan indeks harga import yang berkenaan. Indeks harga import dibuat menggunakan nilai seunit (nilai import dibahagi dengan kuantiti import) dari ETS.

Section 3

Technical Notes

The System of National Accounts (SNA) provides a comprehensive and consistent accounting framework for monitoring the performance of the economy. The SNA framework shows the transactions made in the economy during a period. It measures the value of what has been produced, who produced them, who used the products and the purposes for which they are used. One of the most important aggregates derived from the national accounts is the Gross Domestic Product (GDP).

The new 2000-based GDP series for Brunei Darussalam is consistent with the 1993 SNA. The following paragraphs provide brief descriptions of the concepts and definitions used, as well as the data sources and methodology adopted

Concepts and Definitions

Gross Domestic Product (GDP)

GDP is a measure of the total value of production of goods and services by all resident producing units in an economy during an accounting period, which is usually one year or one quarter.

GDP can be calculated by using three approaches :

- (a) the production approach,*
- (b) the expenditure approach, and*
- (c) the income approach.*

These three approaches present components within the GDP from different perspectives. Theoretically, the different approaches should yield the same GDP value. However, in practice, since different data sources and estimation methods are used, the GDP values obtained by the different approaches may not be equal. This difference is referred to as the statistical discrepancy (SD).

In the 2000-based GDP series for Brunei Darussalam, two approaches are used, namely the production approach and the expenditure approach.

GDP by Production Approach

Under this approach, GDP is the sum of the value-added of the various industries in the economy. Gross Value Added (GVA) is calculated for every economic activity and then summed up to obtain the total gross value added or GDP for the whole economy, i.e.

$$\mathbf{GDP = \Sigma GVA}$$

GVA is derived by deducting the value of goods and services used in the production processes (referred to as intermediate consumption, IC) from the value of goods and services produced (referred to as output, GO), i.e.

$$\mathbf{GVA = GO - IC}$$

GDP by production will show the contributions of the different economic activities to the country's economic performance.

*GDP by production approach is presented by kind of economic activities according to the **Brunei Darussalam Standard Industrial Classification (BDSIC 2001)**, which is based on the **International Standard Industrial Classification (ISIC), Revision 3**.*

GDP by Expenditure Approach

This approach evaluates the final uses of the country's output. The GDP expenditure components are based on the purchases of goods and services for final use, and are sometimes referred to as 'final demand' or 'final expenditure' aggregates. Intermediate purchases of goods and services used for further processing are excluded.

GDP is the sum of private consumption expenditure (PCE), government consumption expenditure (GCE), capital formation or investment (I) and exports (X) less imports (M) of goods and services, i.e :

$$\mathbf{GDP = PCE + GCE + I + X - M}$$

Each of the expenditure components has import contents. Since GDP is the total output of the economy within its domestic territory, the import contents have to be removed. The deduction is done at the aggregate level since it is not practical to remove the value of imports from each component.

A statistical discrepancy (SD) is added to the GDP by expenditure to record the difference in the GDP values obtained from the production and expenditure approaches.

GDP at Current and Constant Prices

In order to aggregate the wide variety of goods and services in a common unit of measurement, GDP is expressed in monetary terms. GDP at current prices refers to GDP measured at the prevailing prices in the current accounting period. GDP at current prices is also referred to as nominal GDP.

Since prices of goods and services change from one period to another, the change in GDP value may be due to changes in volume of the goods or services produced or due to price changes. Therefore, the effects of price changes have to be removed to enable a meaningful comparison to see the changes in the level or volume of economic activities over time. This requires the conversion of GDP current prices to constant prices. GDP at constant prices is also referred to as real GDP.

GDP Deflator

The Implicit Price Deflator (IPD) of the GDP (or GDP deflator in short) is generally used as a broad measure of overall inflation in the economy. IPD of the GDP is obtained by dividing GDP at current prices by GDP at constant prices and then multiplying by 100. Similarly, by dividing each GDP components at current prices with the corresponding constant price figures, the respective price deflator for individual components are implicitly obtained. These are referred to as the Implicit Price Index Numbers (IPIN). The rate of change of the GDP deflator will give the inflation rate of the overall economy.

The GDP deflator and the Consumer Price Index (CPI) are both used as a measure of inflation. However, the movement of the GDP deflator may differ compared to the CPI because the latter only measures price changes in the goods and services purchased by households, that is household final consumption expenditure; whereas GDP deflator takes into account all price changes relating to the production and expenditure components.

GDP Growth Rates

The changes in current price GDP, as measured by the growth rates, reflect the combined effect of the changes in the price level as well as the quantity or volume of production of goods and services from one period to another.

The growth rates of GDP at constant prices give a measure of the 'real' growth of the economy as the effects of price changes have been eliminated.

The annual growth rate, r , in per cent for GDP constant prices (for example, for 2005 compared to 2004) is calculated as follows :

$$r = ((\text{GDP}_{2005} / \text{GDP}_{2004}) - 1) \times 100$$

For the comparison of real GDP over several years, the average annual growth rate, R , in per cent (for example for 2005 compared to 2001) is computed as follows :

$$R = (\text{Ln} (\text{GDP}_{2005} / \text{GDP}_{2001}) / 4) \times 100$$

GDP Per Capita

GDP per capita is obtained by dividing the GDP at current prices by the population size. This is used to indicate the level of economic development in comparison to other countries. GDP per capita is also computed at constant prices. The change in GDP per capita at constant prices is used to indicate the overall economic well-being.

Data Sources

Survey Data

The main bulk of information used in the production accounts was obtained from the results of the Quarterly Survey of Businesses (QSB). QSB is a short survey of medium and large enterprises in the country and thus effectively represents almost 60 per cent of the total value added in the economy. Data on basic indicators such as revenue, employment and compensation were asked in the survey for each quarter of the reference period.

Prices collected for the compilation of the CPI were used to construct price indices for deflating national accounts components.

Administrative Data

To account for the government transactions and other economic activities not covered by the QSB, various administrative data were used. Most of these other information are by-products of the government's administrative and regulatory functions.

For the government sector, information from the Treasury Department, Ministry of Finance were used. GVA of departmental enterprises are also taken from the same set of data. Volume of production data in agriculture were obtained from the Agriculture Department, Ministry of Industry and Primary Resources.

Production, consumption and export data on oil & gas is obtained from the Petroleum Unit, Prime Minister's Office. Some data are also obtained directly from Brunei Shell Petroleum Sdn Bhd (BSP) and Brunei LNG Sdn Bhd (BLNG).

External Trade Statistics (ETS) consisting of imports and exports of commodities is one of main data sources. ETS report is compiled and released by JPKE, but the data is collected and processed by the Royal Customs and Excise Department, Ministry of Finance.

Other Statistical Outputs of JPKE

The latest CPI is a fixed based index with 2002 as the base year. Thus for national accounts purposes, CPI for all items as well as by components are rebased and reweighed using 2000 as the base year.

Exports and imports of services are obtained from the Balance of Payments (BOP) which is compiled by JPKE.

The Brunei Darussalam Statistical Yearbook (BDSYB) and the Brunei Economic Bulletin (BEB) provide a wealth of information used in the estimation or used indirectly to evaluate the data used in the estimation.

Methodology

The annual accounts are estimated using two approaches to the GDP calculation. One is the production accounts which is largely based on the QSB results; and the other is the expenditure accounts which utilised the bulk of administrative data including the government accounts, ETS and BOP.

Production Accounts

For the estimation of output for sectors with data on quantity of production such as for agriculture, mining and LNG manufacturing; output is defined as quantity of production multiplied with producers' prices. GVA is estimated by multiplying output

with a gross value added ratio (GVAR). GVAR is computed using data from 2002 Economic Census (EC), where

$$\mathbf{GVAR = GVA / GO}$$

For sectors with data on volume of production, the constant price estimates can be estimated by valuing current period production at base year prices.

A composite index consisting of average compensation index and All items CPI weighted by value added shares was used to deflate the GVA of some sectors. Some deflators were constructed from the components of CPI, while others were developed as specific-purpose price indices such as export price indices.

Expenditure Accounts

For some of the expenditure components of the accounts, the commonly used technique is based on a supply and use tables (SUT). This estimation procedure requires the satisfaction of the equation, total supply of goods and services equal total uses. Some type of SUT or otherwise known as commodity flow approach is used for the estimation of personal consumption expenditure (PCE) and gross fixed capital formation (GFCF).

Total supply consists of local production and imports of goods and services, adjusted for trade and transport mark-up and tax mark-up. For local output, EC results and QSB based estimates of output were used. While imports of goods are from the ETS, that of services were derived from the BOP. ETS is used for the supply of imported commodities since it contains more detailed information than the BOP.

For the construction sector, the value of construction which was reported in EC and extrapolated using the indicators based on QSB was evaluated using the building materials approach. This is a variant of the commodity flow approach wherein the quantity and value of construction materials was used as indicator of the trends in the construction sector.

Estimation of government final expenditures as well as the gross value added originating from the government services sector is done by identifying from the available detailed government expenditures, those that fall under value added and

intermediate consumption of government sector. GVA of the government is deflated using CPI all items.

Imports and exports of goods are direct estimates from ETS; while that of exports and imports of services are from the estimates of the same items in the BOP.

Imports of goods at constant prices were computed by dividing the current price estimates with the corresponding import price indices. Import price indices were constructed using unit values (value of imports divided by quantity of imports) from ETS.